

Installing the Sitecore Experience Platform

Sitecore Experience Platform 8.2

Installation guide for administrators and developers



sitecore[®]
Own the experience[™]

Table of Contents

Chapter 1	Introduction	4
1.1	Getting Started	5
1.2	Preparing to Install Sitecore XP	6
1.2.1	Install Latest Updates	6
1.2.2	UNC Share Not Supported	6
1.2.3	Sitecore Cannot Operate from a Virtual Directory	7
1.2.4	Install IIS before Updating the .NET Framework	7
Chapter 2	Sitecore XP Requirements	8
2.1	Sitecore Hosting Environment Requirements	9
2.1.1	IIS Requirements	9
2.1.2	Operating System Requirements	9
2.1.3	.NET Framework Requirements	10
2.1.4	Visual Studio Requirements for Custom Solutions	10
2.1.5	Database Requirements	10
	Oracle	11
2.1.6	Antivirus Software Considerations	11
2.1.7	Hardware Requirements for a Server Running a Single Sitecore Installation	11
2.2	Sitecore Client Requirements	12
2.2.1	Software Requirements	12
2.2.2	Hardware Requirements	12
Chapter 3	Installing the Sitecore XP from the .EXE File	13
3.1	The UAC (User Account Control) Configuration	14
3.2	The Installation Process	15
3.2.1	Complete	16
3.2.2	Databases Only	21
3.2.3	Client Only Installation	25
3.3	Troubleshooting	31
Chapter 4	Installing the Sitecore XP from the .ZIP File	32
4.1	Installation Process Overview	33
4.2	Configuring Folder and Registry Permissions	35
4.2.1	File System Permissions for Anonymous Requests	35
4.2.2	File System Permissions for ASP.NET Requests	35
4.2.3	File System Permissions for System Folders	35
4.2.4	File System Permissions for SQL Server Files	36
4.2.5	Windows Registry Permissions	36
	Adding an Account to a User Group	36
4.3	Configuring the IIS	38
4.3.1	IIS 7, 7.5, 8, 8.5	38
	Create the Application Pool	38
	Create the Website	40
	Limit Access to Anonymous Users	41
4.4	Microsoft SQL Server Configuration	43
4.4.1	Creating a Database Account for Sitecore XP Databases on SQL Server 2008, 2012 and 2014	43
4.4.2	Granting Execute Rights to Stored Procedures	45
4.5	Oracle Database Storage Setup	47
	Database Server Preparations	47
	Website Server Setup Instructions	47
4.6	Uninstalling Sitecore XP	49
Chapter 5	Sitecore XP Post-Installation Steps	50
5.1	Content Expiration	51
5.2	Windows Authentication for Sitecore	53
5.3	Setting Microsoft SQL Server Database Properties	54
5.4	Rebuild the Search Index and the Link Database	56

Installing the Sitecore Experience Platform

5.5	Cache Configuration.....	57
5.6	Deploy the Marketing Definition Items.....	58
Chapter 6	Configuring the Sitecore Experience Database.....	59
6.1	Prerequisites	60
6.2	Configuration Process	61
Chapter 7	Appendix	62
7.1	Server Configuration	63
7.1.1	Updating the Security Settings for a Folder	63

Chapter 1

Introduction

This document describes how to install Sitecore Experience Platform 8.2 Update 1 rev. 161115.

The document contains the following chapters:

- **Chapter 1 – Introduction**
An introduction to the Sitecore Experience Platform 8.2 installation process.
- **Chapter 2 – Sitecore XP Requirements**
An outline of the installation requirements for Sitecore CMS.
- **Chapter 3 – Installing the Sitecore XP from the .EXE File**
Describes the pre-installation steps, configuration and installation process.
- **Chapter 4 – Installing the Sitecore XP from the .ZIP File**
Step-by-step instructions for installing Sitecore CMS from the .ZIP file.
- **Chapter 5 – Sitecore XP Post-Installation Steps**
Information about necessary actions after installation.
- **Chapter 6 – Configuring the Sitecore Experience Database**
Step-by-step instructions for configuring Sitecore Experience Database.
- **Chapter 7 – Appendix**
Supplementary instructions for configuring the environment.

Installing the Sitecore Experience Platform

1.1 Getting Started

Sitecore® Experience Platform™ (Sitecore XP) is the name of the entire Sitecore solution. It contains:

- Sitecore CMS – the content management capabilities.
- Sitecore xDB – the experience marketing and scalability, and analytics features.

These components are installed together. Sitecore XP is distributed as an `.exe` or `.zip` file.

1.2 Preparing to Install Sitecore XP

For small implementations, including developer workstations and testing environments, Sitecore XP and the database server can be installed on a single computer. For larger implementations, the database server is typically separated from the application server. The content authoring environment for business users is also frequently separated from the content delivery environment that is accessed by Internet users.

For more information about scaling Sitecore XP solutions, refer to the Sitecore Documentation site – https://doc.sitecore.net/sitecore_experience_platform.

Sitecore XP can be broken down into three logical components regardless of the database technology that is used:

- The IIS document root ("the website").
- The supporting file system for logs and data.
- The supporting relational databases. These databases are often stored under the supporting file system.

Configuration is stored in files such as `web.config` and the files under the `\App_Config` folder.

For information about hardening security after you install Sitecore, see the manual [Security Hardening Guide](#) in the Sitecore Documentation site.

You can create an archive of your Sitecore XP solution to move it from one computer to another.

For assistance or to report any discrepancies between this document and the product, please contact <http://support.sitecore.net/helpdesk/>.

Before installing Sitecore XP, you should decide on the:

- Project name and acronym, for example, *ProjectName*.
- Acronym/prefix, for instance PN.
- Target installation file system root, for instance `C:\inetpub\wwwroot\ProjectName`.
- Database technology:
 - SQL Server 2014, SQL Server 2012.
 - MongoDB Database 2.6 MMAPv1, 3.0 MMAPv1, 3.0 Wired Tiger (for Sitecore xDB), 3.2.1 MMAPv1, 3.2.1 Wired Tiger and 3.2.1 Wired Tiger with encryption.
- Database location – locally or on a remote server.
- Appropriate Sitecore license.
- Hardware.
- Administrative access to computers and databases.
- IIS configuration – host headers, and so on.

1.2.1 Install Latest Updates

Run Windows Update to install all the appropriate service packs and security updates on all of your Sitecore XP host and client computers.

1.2.2 UNC Share Not Supported

Sitecore XP must be installed on a local drive, not a UNC share.

Installing the Sitecore Experience Platform

1.2.3 Sitecore Cannot Operate from a Virtual Directory

Do not create a virtual directory for Sitecore, because the product cannot operate from a virtual directory.

1.2.4 Install IIS before Updating the .NET Framework

To reduce the number of ASP.NET configuration issues on Sitecore hosts, install IIS before installing or updating the .NET framework.

If you have installed or updated the .NET framework before installing the IIS, refer to the following article that contains instructions about troubleshooting an ASP.NET installation:

<http://www.microsoft.com/technet/prodtechnol/WindowsServer2003/Library/IIS/187doe2c-8e89-49ad-a89d-e26e4d76ee68.mspx?mfr=true>

Chapter 2

Sitecore XP Requirements

This chapter describes the prerequisites, hardware, and software requirements for Sitecore XP 8.2 host and client computers. In this document, the term "server" refers to a Windows OS Web server and the term "host" refers to an installation of Sitecore XP on either a server or a workstation.

This chapter contains the following sections:

- Sitecore Hosting Environment Requirements
- Sitecore Client Requirements

Installing the Sitecore Experience Platform

2.1 Sitecore Hosting Environment Requirements

Sitecore XP 8.2 has specific requirements for the operating system, IIS Web Server, .NET Framework, and the database server.

Important

When you configure xDB, you must synchronize all the servers in your solution to a single reliable time source, for example by means of the Network Time Protocol (NTP). The aggregation of engagement automation states depends on the system time and changing this can lead to incorrect aggregation results or loss of data.

2.1.1 IIS Requirements

Sitecore XP can be hosted on the following IIS versions:

- IIS 8.5
- IIS 8.0
- IIS 7.5
- IIS 7.0

You must use the version of IIS that is supported by your operating system. For more information about IIS and operating systems, see Microsoft's documentation.

Sitecore XP does not officially support any other ASP.NET web servers such as IIS Express, or Mono Web Server.

Important

Sitecore neither supports nor permits multiple IIS website definitions pointing to the same Sitecore web root.

2.1.2 Operating System Requirements

Sitecore XP 8.2 is only compatible with the client and server operating systems that support .NET Framework 4.5.2.

Sitecore XP can be hosted on the following Microsoft operating systems:

- Windows Server 2012 R2 (64-bit)
- Windows Server 2012 (64-bit)
- Windows Server 2008 R2 (32/64-bit) SP1
- Windows 8.1 (32/64-bit)
- Windows 8 (32/64-bit)
- Windows 10 (32/64-bit)

Important

Run Windows Update and install all the appropriate service packs and security updates on all of your Sitecore XP host and client computers.

Windows 10

Sitecore XP supports the following editions of the Windows 10 operating system:

- Home
- Education
- Professional

Windows 8.1

Sitecore XP supports the following editions of the Windows 8.1 operating system:

- Enterprise
- Professional
- Core

Windows 8

Sitecore XP supports the following editions of the Windows 8 operating system:

- Enterprise
- Professional
- Core

2.1.3 .NET Framework Requirements

Sitecore XP requires .NET Framework 4.5.2.

You must apply any available updates to the .NET Framework to every Sitecore installation.

When using .NET Runtime 4.5.2, you must change the `web.config` file from:

```
<configuration>
  <system.web>
    <httpRuntime/>
  </system.web>
</configuration>
```

to

```
<configuration>
  <system.web>
    <httpRuntime targetFramework="4.5.2" />
  </system.web>
</configuration>
```

2.1.4 Visual Studio Requirements for Custom Solutions

Sitecore XP 8.2 requires Visual Studio 2012 or later.

2.1.5 Database Requirements

Sitecore XP supports the following database servers:

- Microsoft SQL Server 2008 R2 SP1
- Microsoft SQL Server 2012
- Microsoft SQL Server 2014
- MongoDB Database:
 - Mongo 2.6 MMAPv1
 - Mongo 3.0 MMAPv1 or WiredTiger
 - Mongo 3.2.1 MMAPv1 or WiredTiger
 - Mongo 3.2.1 Enterprise with data-at-rest encryption, WiredTiger only

Note

Sitecore recommends that you run the database on a separate server from the web server.

Installing the Sitecore Experience Platform

Oracle

The Oracle database storage setup is only available when Sitecore XP is running in Sitecore Experience Management mode (CMS-only mode), which lets you run Sitecore XP without the Experience Database (xDB) enabled.

Sitecore supports:

- Oracle Database 11g R2 (11.2)

2.1.6 Antivirus Software Considerations

Some antivirus software can have a detrimental effect on the performance of ASP.NET applications including Sitecore. We therefore recommend that you use only antivirus scanners that are certified for the operating system that you use.

For more information about the certified products, see the [Windows Server Catalog](#) website.

To ensure optimal performance, exclude the following folders from scanning by your antivirus software:

- The site root folder.
- The data folder that is defined in the web.config file.
- The folder that contains the actual Sitecore database files.
- The C:\Windows\Temp or {app_pool user profile}\Temp folder.

2.1.7 Hardware Requirements for a Server Running a Single Sitecore Installation

Minimum configuration requirements:

- 4 core processor
- 8GB of RAM

Recommended configuration:

- 4 core processor
- 16GB of RAM

Note

The recommended hardware requirements are for running the software on a single computer. For more information about running Sitecore on different kinds of hardware, consult your Sitecore partner or technical sales representative.

2.2 Sitecore Client Requirements

This section describes the software and hardware requirements.

2.2.1 Software Requirements

Browser

Sitecore XP clients are browser-based user interfaces and can run on the following browsers:

- Microsoft Internet Explorer 11
- Mozilla Firefox 17+
- Google Chrome 25+
- Microsoft Edge
- Apple Safari 6+ for Mac OS

Note

Sitecore XP 8.2 supports all the current stable versions of these browsers unless stated otherwise. Sitecore XP 8.2 does not support the Compatibility view in Internet Explorer 11.

For more information about configuring a browser, see the [Browser Configuration Reference](#) document on the Sitecore Developer Network.

Silverlight

Some applications, such as Engagement Automation, and Sitecore App Center require Microsoft Silverlight 5 or later.

2.2.2 Hardware Requirements

- Processor: Intel Pentium 4, 2GHz or faster processor.
- RAM: 512 MB minimum, 1GB – recommended.
- TCP/IP connection at 512Kbps or faster to the Sitecore XP host.
- 1024 x 768 or greater screen resolution required for advanced operations.

You do not need to install any additional software on the Sitecore XP clients that access Sitecore XP servers.

Chapter 3

Installing the Sitecore XP from the .EXE File

This chapter describes how to use the installation program to install Sitecore XP.

You can download the Sitecore installation program from the [Sitecore Developer Portal](#).

This chapter contains the following sections:

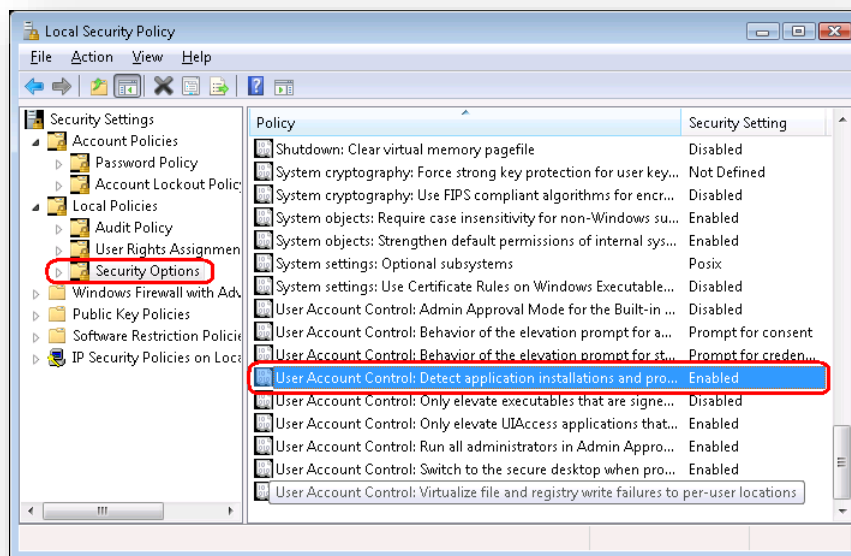
- The UAC (User Account Control) Configuration
- The Installation Process
- Troubleshooting

3.1 The UAC (User Account Control) Configuration

Before you run the installation program on Windows 8, Windows 8.1 or Windows 10, you must ensure that the UAC (User Account Control) configuration security policy *Detect application installations and prompt for elevation* is enabled.

To check if this setting has been changed on your computer:

1. Log in as an administrator.
2. Press WIN + R to open the **Run** window.
3. In the **Run** window, enter *secpol.msc* and press ENTER.
4. Click **Continue** to open the **Local Security Policy** window.



5. In the left-hand pane, expand the *Local Policies* node and select *Security Options*.
6. In the right-hand pane, scroll to the bottom of the list of policies.
7. Verify that the *User Account Control: Detect application installations and prompt for elevation* policy is set to *Enabled*.

If this setting is not enabled, you must enable it.

Installing the Sitecore Experience Platform

3.2 The Installation Process

To start the installation, launch the *Sitecore.exe* application, which starts the installation wizard. The installation wizard will guide you through the installation process.

This section describes the important steps in the wizard.

Note

The Sitecore XP configuration files are automatically modified according to the settings provided in the wizard.

Welcome Window



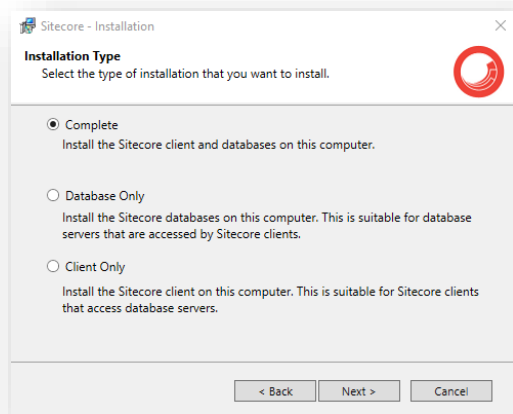
Click **Next**.

License Agreement



Read the license agreement and select the appropriate option. Click **Next**.

Installation Type



Select the type of installation that you want:

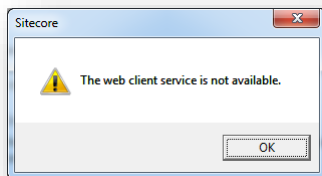
- Complete — installs both the Sitecore databases and the Sitecore client.
- Database only — only installs the Sitecore databases.
- Client only — installs everything except the databases.

3.2.1 Complete

This installs both the Sitecore databases and the Sitecore client.

In the **Installation Type** window, select **Complete**.

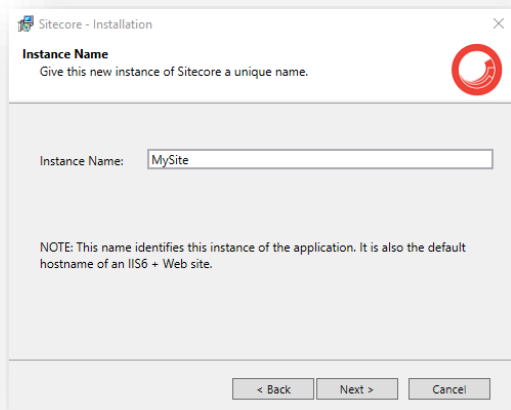
To install Sitecore WebDAV features, you must have the WebClient service on your computer. If the `WebClient` service is not available, the following message appears:



Disregard this message if you do not want to install WebDAV features. Click **Next**.

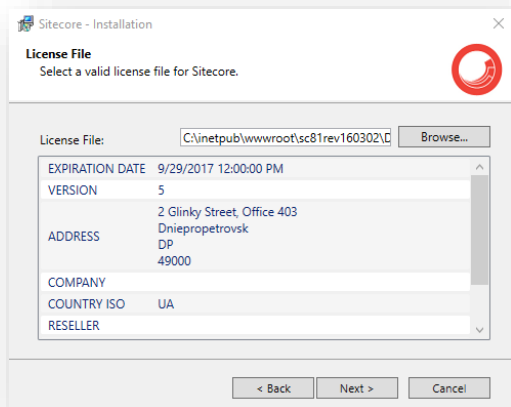
Installing the Sitecore Experience Platform

Instance Name



Give a unique name to this new instance of Sitecore. If you choose to create a new site at a later step, this name is also used as the hostname of an IIS web site.

License File



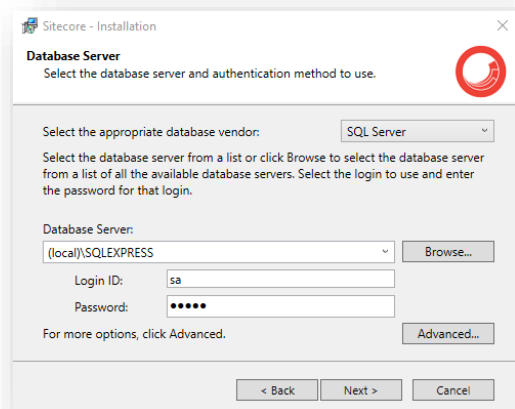
Click **Browse** to navigate to the license file that you want to use, and then click **Next**.

Sitecore Experience Platform 8.2

Database Server

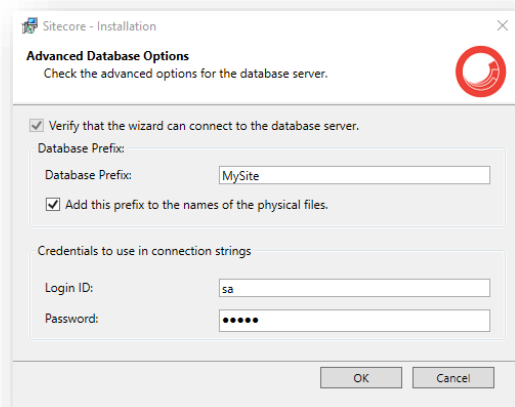
Select the database server.

If you select SQL Server, you see the following **Database Server** dialog box:



Select the database server from a list, or click **Browse** to see a list of all the database servers that are available. Enter the login ID (SQL server user name) and the corresponding password. The installation program uses these credentials to access the SQL server.

To set the database prefix options, click **Advanced** and the **Advanced Database Options** dialog box appears:



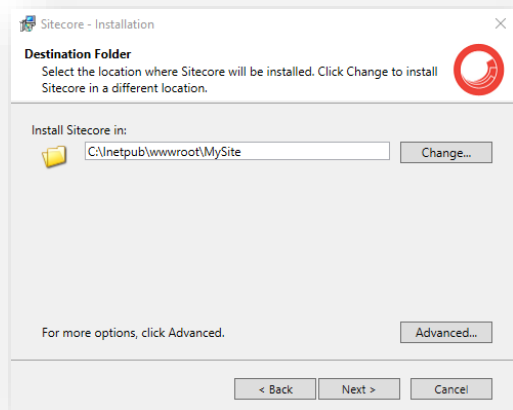
In the **Advanced Database Options** dialog box, specify the database prefix for this instance of Sitecore XP, and if you want the database prefix to be added to the names of the physical files, select the **Add this prefix to the names of the physical files** check box.

Enter the login ID (SQL server user name) and corresponding password. Sitecore applications will use these credentials to access the SQL server. Click **OK**.

Click **Next**.

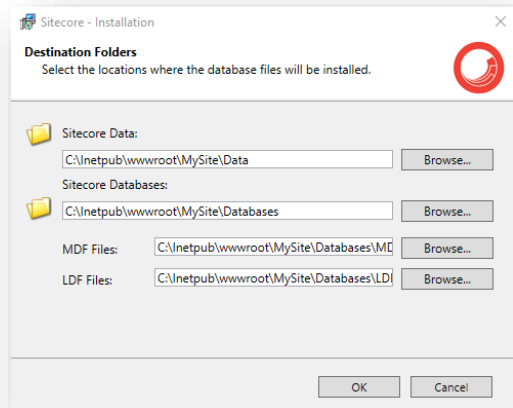
Installing the Sitecore Experience Platform

Destination Folder



Select the folder where the Sitecore web site should be installed.

To change the database folder and the folder where various data files are stored — log files, packages, and so on — click **Advanced** and the **Destination Folders** dialog box appears:



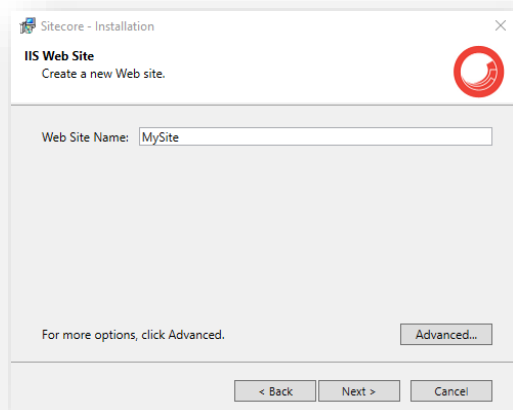
Enter new destination folders, and click **OK**.

Click **Next**.

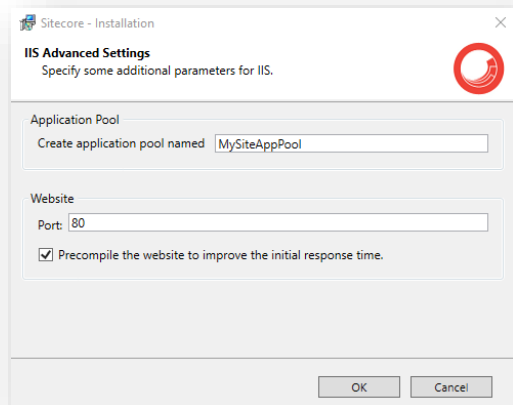
Note

Make sure that SQL server has the permissions to write to the destination folder(s).

IIS Web Site

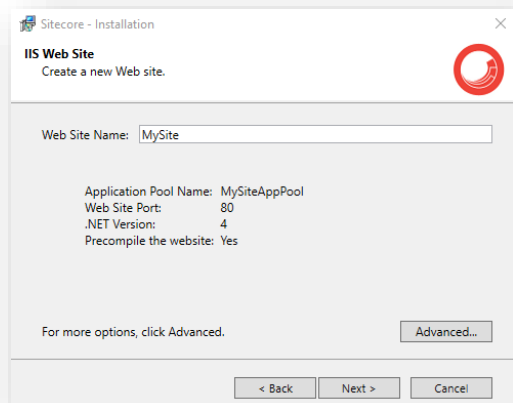


Enter the name of the new website. Click **Advanced** to edit a website port and create an Application Pool. Select the **Precompile the website to improve the initial response time** check box.



Click **OK**.

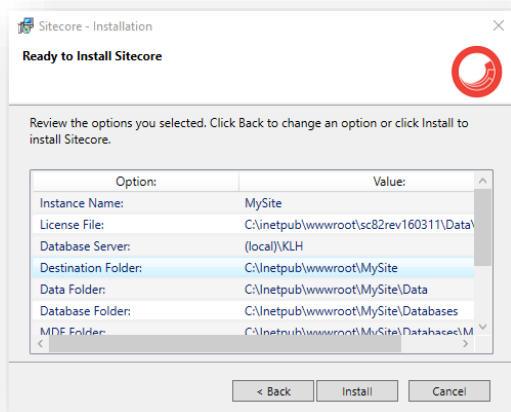
The **IIS Web Site** dialog box reflects the changes.



Click **Next**.

Installing the Sitecore Experience Platform

Ready to Install Sitecore



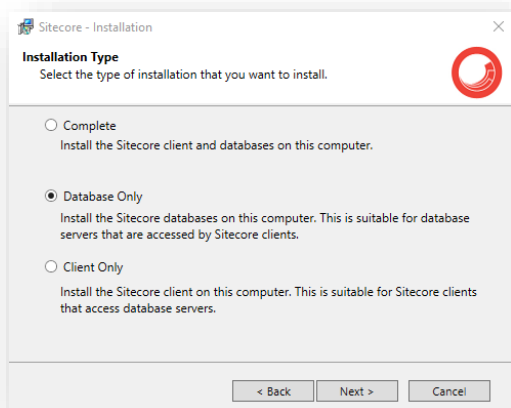
Review the options you selected. Click **Install** to install Sitecore XP.

A progress window informs you of the installation process.

3.2.2 Databases Only

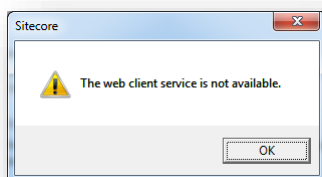
This section describes the Databases Only installation. This option only installs the Sitecore databases.

Installation Type



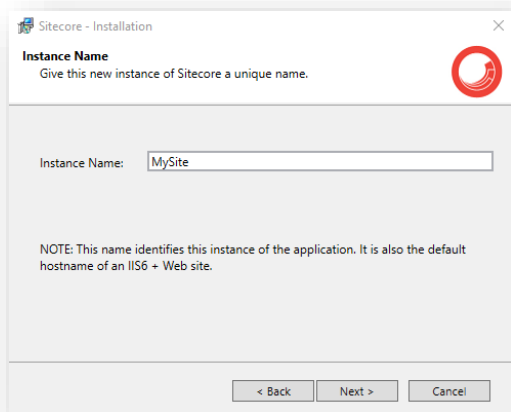
Select the **Database only** option to only install the databases.

To install Sitecore WebDAV features, you must have the WebClient service on your computer. If not, the following message appears:



Disregard this message if you do not want to install WebDAV features.

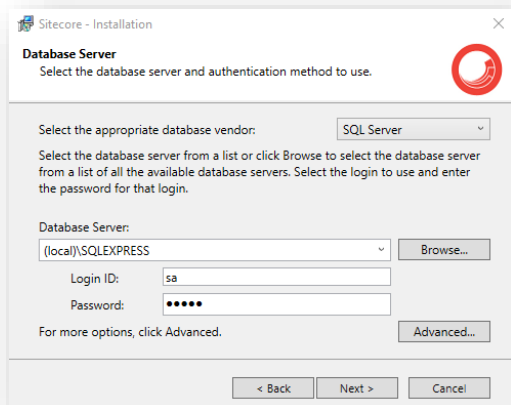
Instance Name



Give this new instance of Sitecore XP a unique name. If you choose to create a new site at a later step, this name is also used as the hostname of an IIS web site.

Database Server

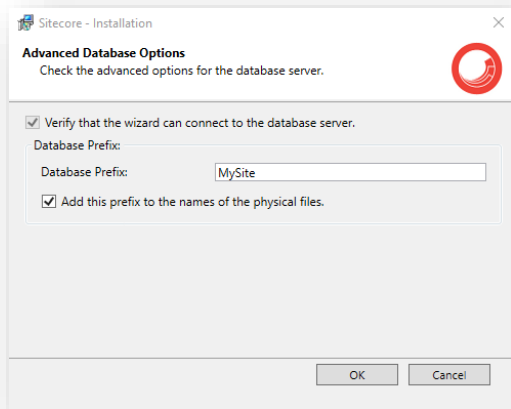
You see the following **Database Server** dialog box:



Installing the Sitecore Experience Platform

Select the database server from a list or click **Browse** to see a list of all the database servers that are available. Enter the login ID — SQL Server user name — and the corresponding password. The installation program uses these credentials to access the SQL server.

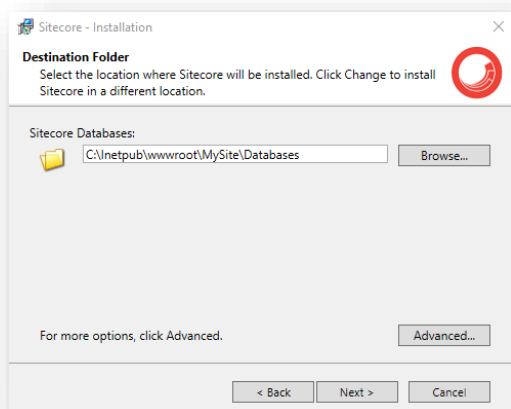
To set the database prefix options, click **Advanced** and the **Advanced Database Options** dialog box appears.



In the **Advanced Database Options** dialog box, specify the database prefix for this instance of Sitecore XP, and if you want the database prefix to be added to the names of the physical files, select the **Add this prefix to the names of the physical files** check box.

Click **OK**, and then Click **Next**.

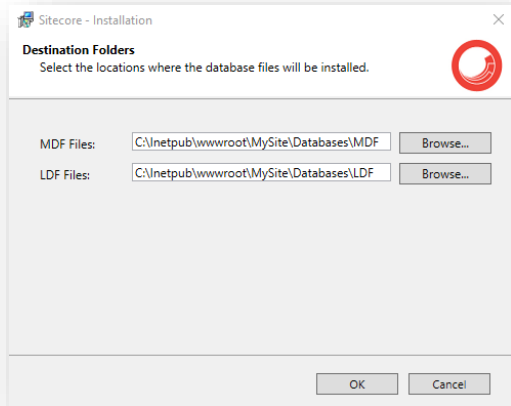
Destination Folder



Select the location where the databases are installed.

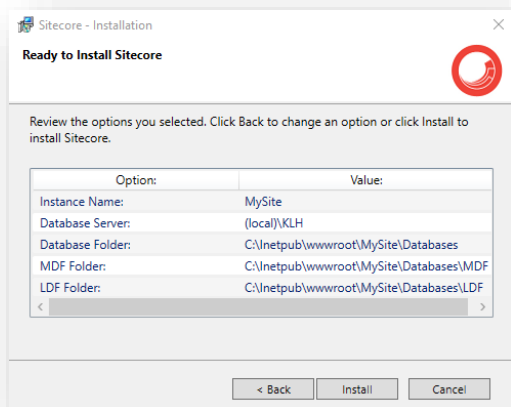
Sitecore Experience Platform 8.2

To change the database folder and the folder where various database files are stored, click **Advanced**. The **Destination Folders** dialog box appears:



Enter the path to the destination folders, and then click **OK**.

Ready to Install Sitecore



Review the options you selected. To install Sitecore XP, click **Install**.

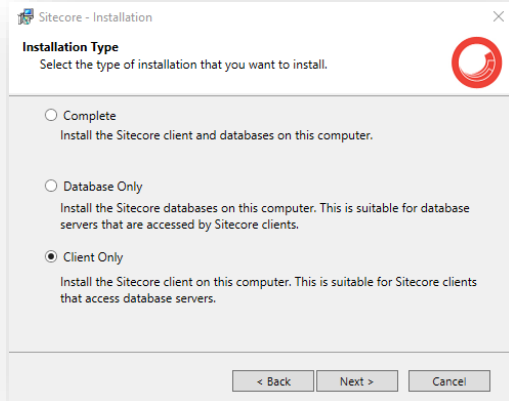
A progress window informs you of the installation process.

Installing the Sitecore Experience Platform

3.2.3 Client Only Installation

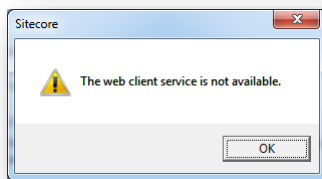
This section describes the Client Only installation. This installs everything except databases.

Installation Type



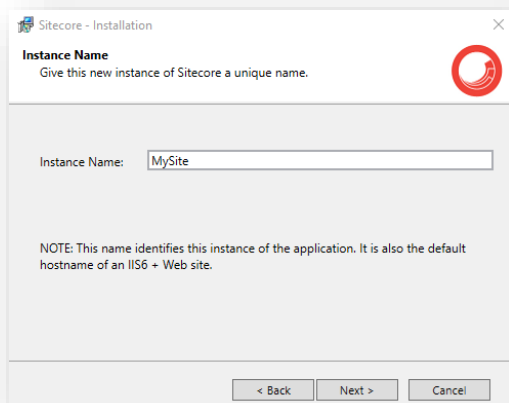
Select the **Client only** option.

To install the Sitecore WebDAV features, you must have the `WebClient` service on your computer. If not, the following message appears:



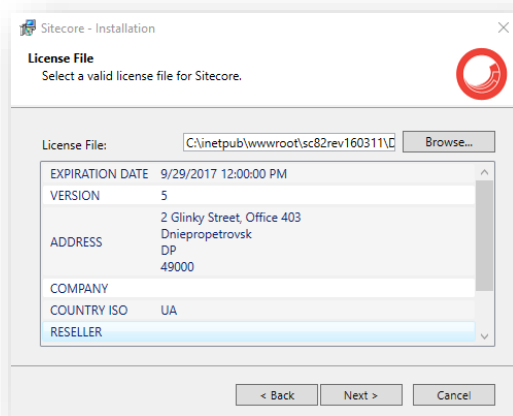
Disregard this message if you do not want to install WebDAV features. Click **Next**.

Instance Name



Give a unique name to the new instance of Sitecore XP. If you choose to create a new site at a later step, the hostname of an IIS web site will also use this name.

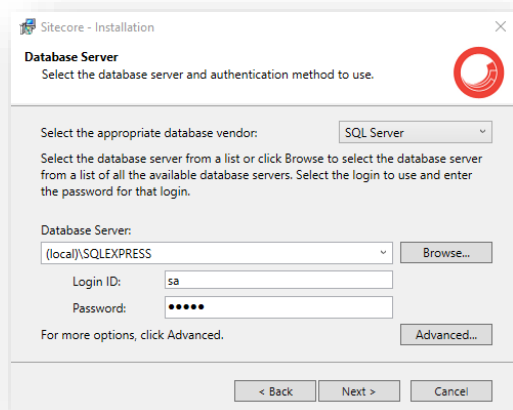
License File



Click **Browse** to navigate to the license file that you want to use, and then click **Next**.

Database Server

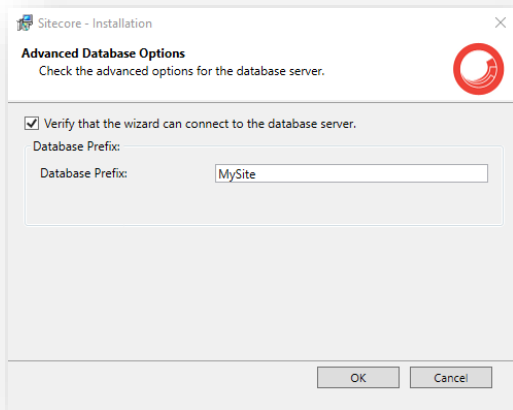
You see the following **Database Server** dialog box:



Select the database server from a list or click **Browse** to see a list of all the database servers available. Enter the login ID (SQL Server user name) and the corresponding password. The installation program uses these credentials to access the SQL server.

To set the database prefix options, click **Advanced** and the **Advanced Database Options** dialog box appears.

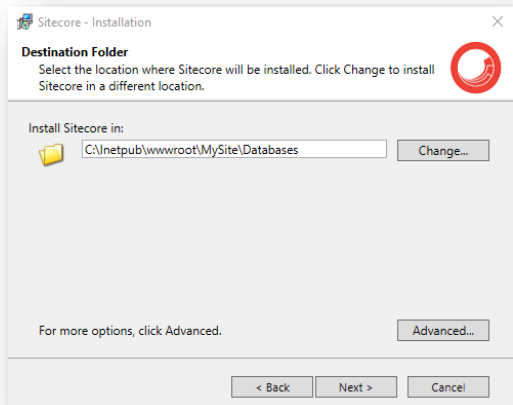
Installing the Sitecore Experience Platform



In the **Advanced Database Options** dialog box, specify the database prefix for this instance of Sitecore XP, and select the **Verify that the wizard can connect to the database server** check box. Click **OK**.

Click **Next**.

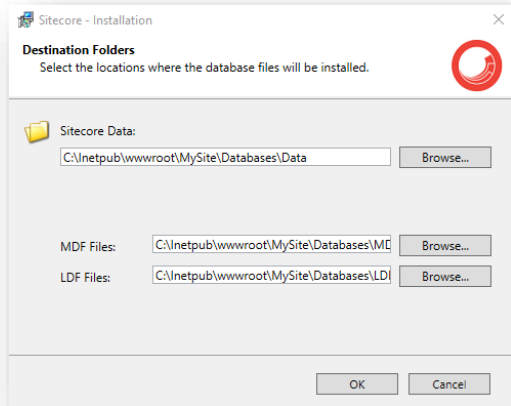
Destination Folder



Select the location where Sitecore will be installed.

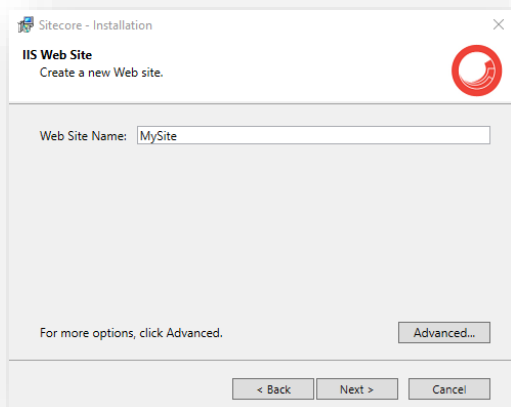
Sitecore Experience Platform 8.2

To change the database folder and the folder where various database files are stored, click **Advanced** and the **Destination Folders** dialog box appears:



Enter the path to the destination folders, and click **OK**.

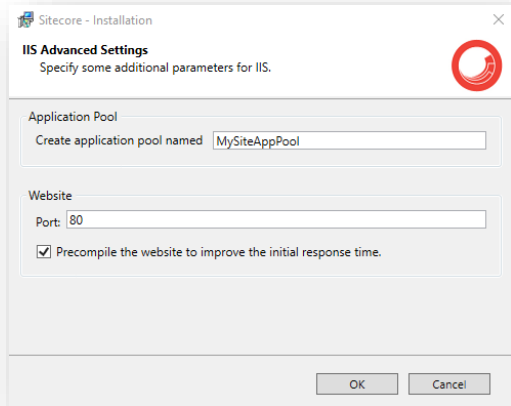
IIS Web Site



Enter the name of the new website.

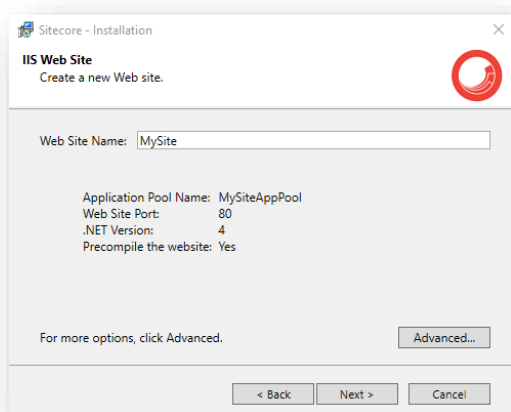
Installing the Sitecore Experience Platform

Click **Advanced** to edit a website port and create an Application Pool name. Select the **Precompile the website to improve the initial response time** check box.



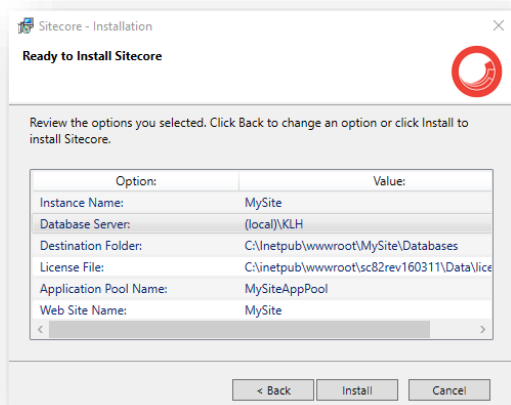
Click **OK**.

The **IIS Web Site** dialog box reflects the changes:



Click **Next**.

Ready to Install Sitecore



Sitecore Experience Platform 8.2

Review the options you selected. Click **Install** to install Sitecore.

A progress window informs you of the installation process.

3.3 Troubleshooting

If there is an error during installation

If the installation program fails, a log file is automatically created. You can find the log file in the `\%TEMP%\SitecoreInstaller.log` folder.

Ensure that you save the log file, and if necessary, attach it to your support request.

Important

The log file is recreated during each installation attempt. If there are errors during installation, you must save and copy the log file to another location right after an unsuccessful installation. Otherwise, the file will be overwritten.

"Database '...' cannot be upgraded" error message while using SQL Server

When using SQL Server, the installer returns the "*Database '...' cannot be upgraded*" error message. To avoid this, the user account configured to run the SQL server application must have full access permissions to the website root folder.

Typically, the SQL server application runs in the context of the NETWORK SERVICE account.

For more information, see the section File System Permissions for SQL Server Files.

Chapter 4

Installing the Sitecore XP from the .ZIP File

This chapter describes how to install Sitecore XP 8.2 from the ZIP file of the website root.

This chapter contains the following sections:

- Installation Process Overview
- Configuring Folder and Registry Permissions
- Configuring the IIS
- Microsoft SQL Server Configuration
- Oracle Database Storage Setup
- Uninstalling Sitecore XP

Installing the Sitecore Experience Platform

4.1 Installation Process Overview

This section describes how to install Sitecore from a ZIP archive of the Sitecore XP site root.

You can download the Sitecore XP ZIP archive from the [Sitecore Developer Portal](#).

To install an instance of Sitecore:

1. Ensure that the ASP.NET feature is enabled for Internet Information Services (IIS).
2. Choose a parent directory path for the project, for example
`C:\InetPub\wwwroot\ProjectName`
3. Extract the .zip archive to create the following folders:
`C:\InetPub\wwwroot\ProjectName\Website`
`C:\InetPub\wwwroot\ProjectName\Data`
`C:\InetPub\wwwroot\ProjectName\Databases`
4. Set permissions as described in the section *Configuring Folder and Registry Permissions*.
5. In the `Website\App_Config\Include` folder, enable the `DataFolder.config` file and change the following setting to the absolute location of the `\Data` folder.

```
<sc.variable name="dataFolder">
  <patch:attribute name="value">/data</patch:attribute>
</sc.variable>
```

For example: `C:\InetPub\wwwroot\ProjectName\Data`

6. Copy the appropriate `license.xml` file to the `\Data` folder.
7. Attach the SQL databases from the `\Databases` folder to the SQL server.
For more information about working with SQL Server, see the section *Microsoft SQL Server Configuration*.
8. Edit the `ConnectionStrings.config` file located in the `\Website\App_Config\` folder.

Enter a connection string for each database, for example:

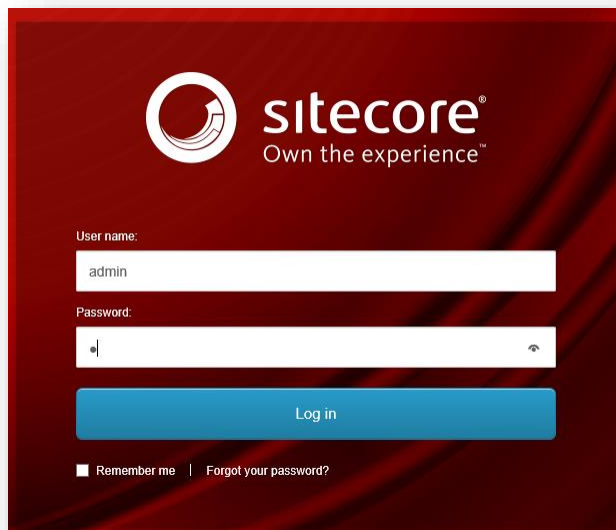
```
<add name="core" connectionString="user
id= sql server user ;password= user password ;Data
Source= _sqlserver_ ;Database= _core_database_name_" />
```

9. In the IIS, configure the website as described in the section *Configuring the IIS*.
10. Configure the Internet Explorer browser as described in the *Browser Configuration Reference* manual.
11. Start the browser and enter the following URL:

`http://ProjectName/sitecore`

Sitecore Experience Platform 8.2

You should see the Sitecore login screen:

The image shows the Sitecore login interface. At the top left is the Sitecore logo, a white circle with a stylized 'S' inside. To its right is the text 'sitecore' in a bold, sans-serif font, with 'Own the experience™' in a smaller font below it. Below the logo and text are two input fields. The first is labeled 'User name:' and contains the text 'admin'. The second is labeled 'Password:' and contains a single character 'b'. Below the password field is a blue button with the text 'Log in'. At the bottom left of the form area, there is a checkbox labeled 'Remember me' and a link labeled 'Forgot your password?'. The entire login form is set against a dark red background with a subtle, wavy pattern.

The default password for the Admin user is "b".

4.2 Configuring Folder and Registry Permissions

This section describes the NTFS permissions for folders and files, as well as Windows registry permissions required by Sitecore XP to function properly. For practical advice on how to edit NTFS permissions and registry permissions, please refer to the section *Server Configuration*, and to the Microsoft Developer Network website.

4.2.1 File System Permissions for Anonymous Requests

Certain types of browser requests (generally for directory lookups and static resources) are executed with the permissions of the anonymous Internet user account. This account requires *Read* permission for all the files, folders, and subfolders under the `\Website` folder.

The following table contains the default name for this account in different versions of IIS:

IIS version	Default anonymous Internet user account name
7, 7.5, 8.0, 8.5	IUSR

If IIS is not configured to use the default IUSR account for processing anonymous requests or if Anonymous authentication is not enabled for the website, the previously mentioned permissions should be granted to the corresponding account(s).

4.2.2 File System Permissions for ASP.NET Requests

Sitecore XP executes requests for ASP.NET resources and all the .NET code running within the application with the permissions of the account configured as an identity for the website's application pool.

This account requires *Modify* permissions for all the files, folders, and subfolders under the `\Website` and `\Data` folders.

The following table contains the default account used for processing ASP.NET requests in the different versions of IIS:

IIS version	Default ASP.NET account name
7	NETWORK SERVICE
7.5	NETWORK SERVICE
8.0	NETWORK SERVICE
8.5	NETWORK SERVICE

IIS 7 and later allows you to change the user account that is used for processing ASP.NET requests.

If you select a different user account to process the ASP.NET requests, you must also grant this account the *Modify* permissions.

Note

For more information about application pool identities and specifically about assigning rights to the AppPoolIdentity account, see the following article: <http://learn.iis.net/page.aspx/624/application-pool-identities/>

4.2.3 File System Permissions for System Folders

To be able to load .NET runtime and ASP.NET resources used for processing the ASP.NET requests, the worker process hosting the Sitecore XP application requires access to multiple system files and folders that are not distributed as a part of Sitecore XP, but are installed as a part of the Windows Operating System and the .NET framework.

Most of these permissions are granted by IIS to all ASP.NET applications, automatically making the application pool identity account a member of the *IIS_IUSRS* security group.

However, on certain environments it is necessary to manually grant permissions for the application pool identity to the following system locations:

Default location	Required permissions	Comments
%WINDIR%\temp\	Modify	
%WINDIR%\Globalization\	Modify	Required for registering custom languages by the .NET Framework correctly.
%PROGRAMDATA%\Microsoft\Crypto	Modify	Required for storing cryptographic keys used for encrypting/decrypting data.

Note

ASP.NET and/or IUSR account require the modify access rights to the `\temp` folder to install Sitecore XP.

These variables have the following default values:

Variable	Default value
%WINDIR%	C:\Windows
%PROGRAMDATA%	C:\ProgramData for IIS 7 and later

Note

For more information about built-in groups and accounts in IIS, refer to <http://learn.iis.net/page.aspx/140/understanding-built-in-user-and-group-accounts-in-iis-7/>

4.2.4 File System Permissions for SQL Server Files

If you are using SQL Server, the user account configured to run the SQL server application requires *Full access* to the `\Databases` folder containing MDF and LDF database files. Typically, the SQL Server application runs within the context of the *NETWORK SERVICE* account.

4.2.5 Windows Registry Permissions

Sitecore XP contains a built-in functionality that reads and updates the Windows performance counters that can be used for monitoring and troubleshooting the Sitecore application. This functionality requires access to Windows registry keys. This access can be granted by making the application pool identity a member of the built-in *Performance Monitor Users* group.

Note

If the required registry permissions are not granted, the "Access to the registry key 'Global' is denied" error will be registered in the Sitecore log files whenever the application attempts to access Windows performance counters.

To avoid this error, you must prevent Sitecore from updating the performance counters. To do that, in the `web.config` file, set the `Counters.Enabled` setting to *false*.

Adding an Account to a User Group

To add a Windows account to a user group, use the `net localgroup` command.

For example, to add the *NETWORK SERVICE* account to the *Performance Monitor Users* group, run the following command on the server hosting the Sitecore XP web application:

Installing the Sitecore Experience Platform

```
net localgroup "Performance Monitor Users" /add "NETWORK SERVICE"
```

An IIS reset is required for the changes to take effect.

For more information about the `net localgroup` command, refer to

http://www.microsoft.com/resources/documentation/windows/xp/all/proddocs/en-us/net_localgroup.mspx

4.3 Configuring the IIS

The following sections describe how to configure different versions of IIS (versions 7, 7.5, 8 and 8.5) for Sitecore XP.

The following list shows which operating systems use which IIS versions:

- IIS 7.5 – Windows Server 2008 R2 SP3, Windows 7
- IIS 8 – Windows Server 2012, Windows 8, Windows 10
- IIS 8.5 – Windows Server 2012 R2, Windows 8.1
- IIS 10 – Windows 10

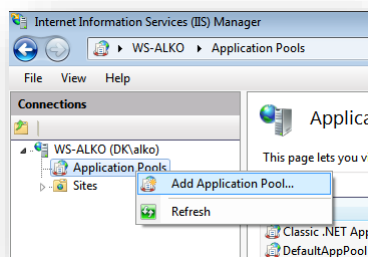
4.3.1 IIS 7, 7.5, 8, 8.5

This section contains the instructions for IIS 7, 7.5, 8 and 8.5.

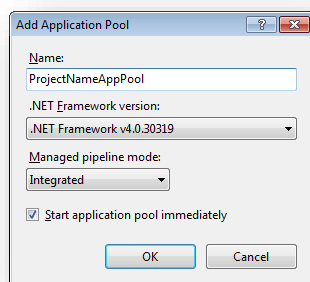
Create the Application Pool

To create the application pool for Sitecore on IIS 7, 7.5, 8 and 8.5:

1. Start the **IIS Manager**.
2. In the **Connections** panel, select **Application Pools**.



3. Right-click **Application Pools** and click **Add Application Pool**.



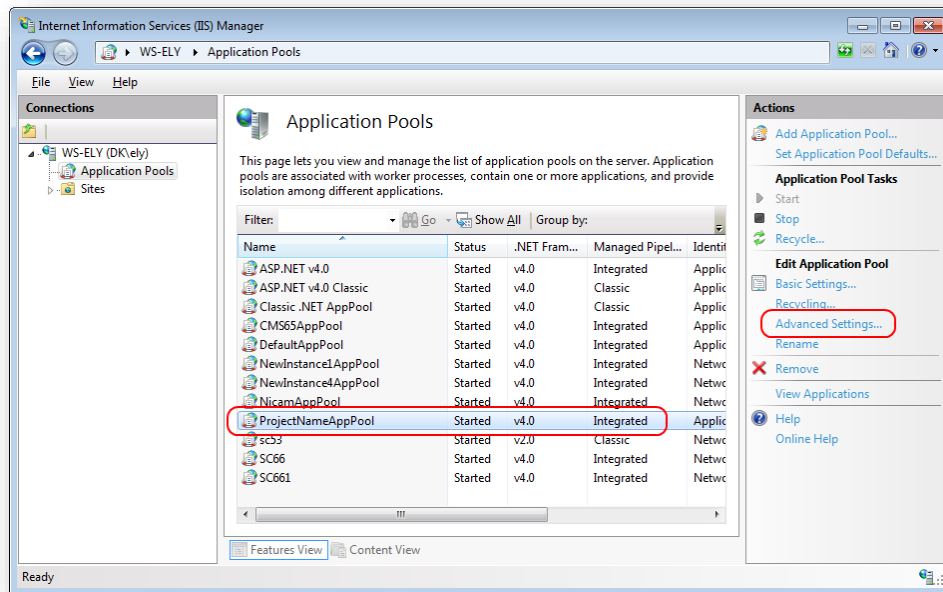
4. In the **Add Application Pool** dialog box, enter the following values:

Field	Value
Name	ProjectNameAppPool
.NET Framework version	4.X.X
Managed pipeline mode	Integrated

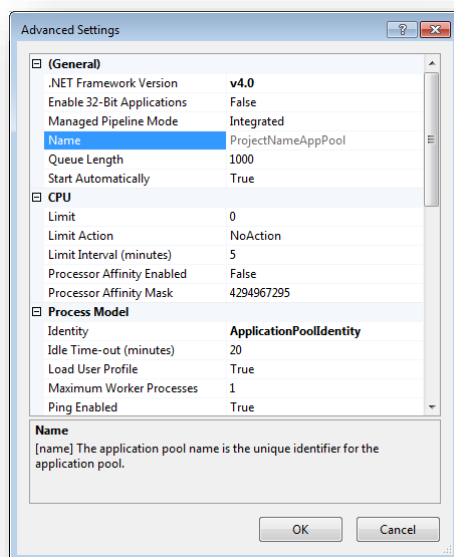
5. Click **OK**.

Installing the Sitecore Experience Platform

- In the **Application Pools** panel, click and select the application pool you have just created.



- In the **Actions** panel, click **Advanced Settings**.

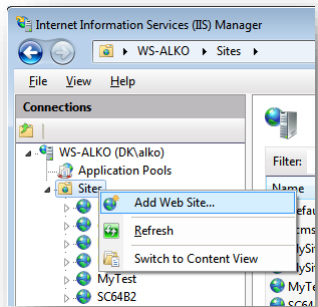


- In the **Advanced Settings** dialog box:
 - Set the .NET Framework version to v4.0
 - Set the **Identity** setting to the built-in account called *ApplicationPoolIdentity* or *NetworkService*.
 - Ensure that the **Maximum Worker Processes** setting is set to 1.
 - Set the **Load User Profile** setting to *True*.

Create the Website

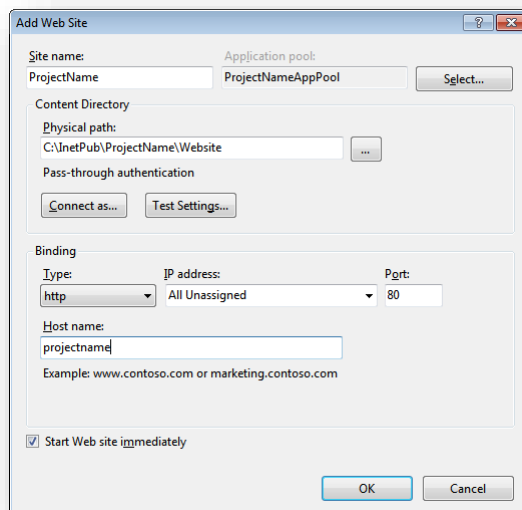
To configure the website:

1. Start the **IIS Manager**.
2. In the **Connections** panel, expand **Sites**.



3. Right-click **Sites** and then click **Add Web Site**.
4. In the **Add Website** dialog box, fill in the required fields, for example:

Field	Value
Site name	ProjectName
Application pool	ProjectNameAppPool
Physical path	C:\InetPub\ProjectName\Website
Host name	Projectname



5. Click **OK**.

Installing the Sitecore Experience Platform

6. Open the hosts file – `C:\Windows\System32\drivers\etc\hosts` – and add the following line:

```
127.0.0.1      projectname
```

Now you can access your website by entering the `http://projectname` address in your browser.

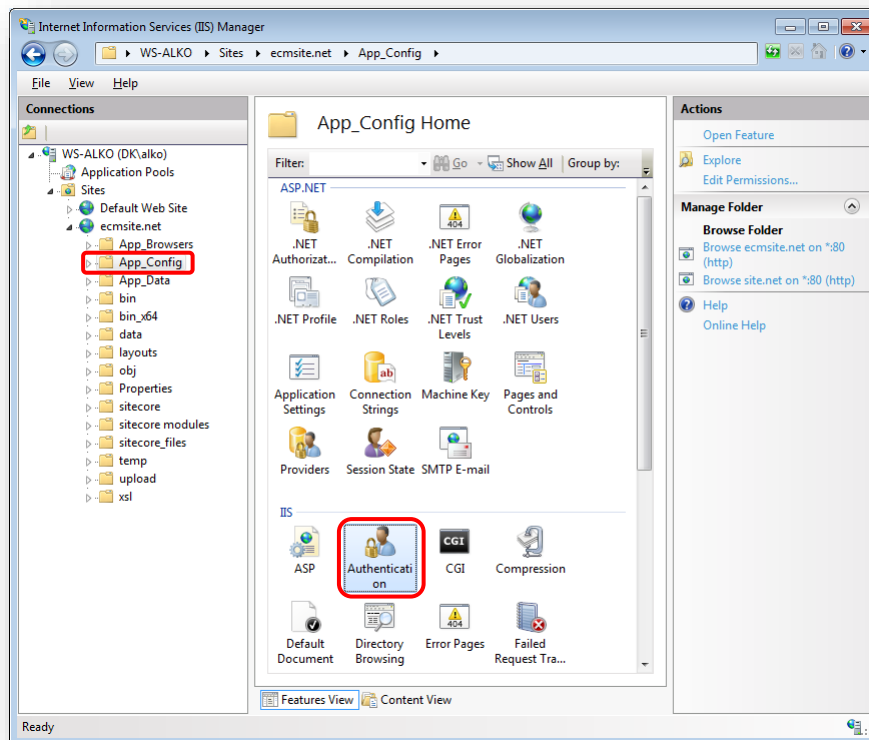
Limit Access to Anonymous Users

You should prevent anonymous users from accessing the following folders:

- `\App_Config`
- `\sitecore\admin`
- `\sitecore\debug`
- `\sitecore\shell\WebService`

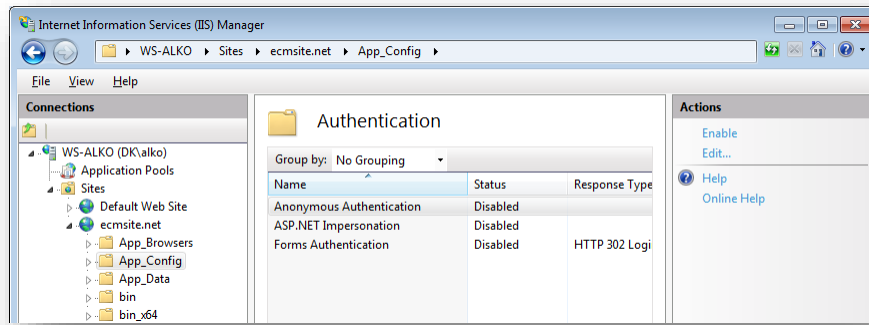
For example, to limit anonymous access to the `\App_Config` folder:

1. Open the IIS.
2. In the **Connections** panel, browse to your Sitecore site and select the `\App_Config` folder.



3. In the **App_Config Home** panel, double-click **Authentication** to configure the authentication settings for this folder.

4. In the **Authentication** panel, ensure that **Anonymous Authentication** is disabled.



Repeat steps 2-4 for the other folders you want to secure.

5. Restart IIS.

Note

If you have one or more processing, dedicated publishing, and or indexing servers that do not handle requests, ensure that you use [Application Initialization](#) (IIS 8.0) or the [appropriate module](#) (IIS 7.5), so you can successfully start Sitecore after you recycle the application pool.

If you do not do this, Sitecore will not be launched and its application pool may shut down due to inactivity.

Installing the Sitecore Experience Platform

4.4 Microsoft SQL Server Configuration

When you install Microsoft SQL Server, select **Mixed Mode** authentication (Windows Authentication and SQL Server Authentication).

If you have already installed MS SQL and you need to change the security authentication mode, refer to the following: <http://technet.microsoft.com/en-us/library/ms188670.aspx>

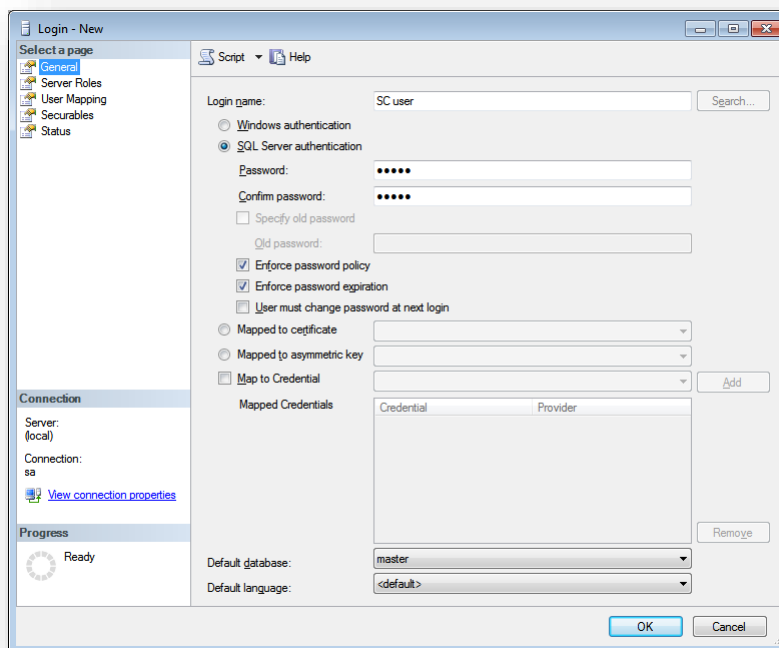
Note

You can also use Windows authentication to connect to the SQL server. For more information on connecting to the SQL server, see <http://msdn.microsoft.com/en-us/library/ff647396.aspx>

4.4.1 Creating a Database Account for Sitecore XP Databases on SQL Server 2008, 2012 and 2014

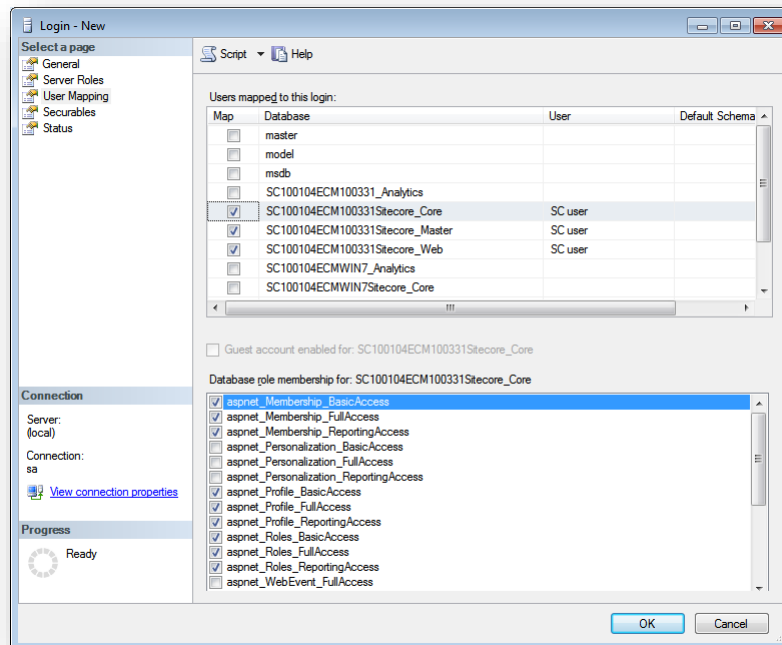
This section describes how to create a database account for Sitecore databases under SQL Server 2008 with the minimum required permissions.

1. Start **SQL Server Management Studio**.
2. Make sure the Sitecore databases are attached.
3. In **SQL Server Management Studio**, in the **Object Explorer** pane, expand the *Security* folder.
4. Right-click the *Logins* folder and click **New Login** to create a new login.



5. In the **Login – New** window, select the **General** page and specify the login name.
6. Select the **SQL Server authentication** option and clear the **User must change password at next login** check box (this option is not supported on some Windows operating systems).

7. Select the **User Mapping** page and in the **User mapped to this login** field, select the Sitecore databases.



8. In the **Database role membership for** field, select the following check boxes:

For the Master and the Web databases:

- db_datareader
- db_datawriter
- public

For the Analytics database:

- db_datareader
- db_datawriter
- public

If you perform historical aggregation:

- 1) In SQL Server Management Studio, connect to the SQL Server instance that will be used for Historical Aggregation.
- 2) Find the database that will be used for Historical Aggregation.
- 3) Open a New Query window.
- 4) Execute the following:

```
GRANT ALTER TO [Username];
GRANT REFERENCES TO [Username];
```

For the Core database:

- db_datareader
- db_datawriter
- public
- aspnet_Membership_BasicAccess

Installing the Sitecore Experience Platform

- aspnet_Membership_FullAccess
- aspnet_Membership_ReportingAccess
- aspnet_Profile_BasicAccess
- aspnet_Profile_FullAccess
- aspnet_Profile_ReportingAccess
- aspnet_Roles_BasicAccess
- aspnet_Roles_FullAccess
- aspnet_Roles_ReportingAccess

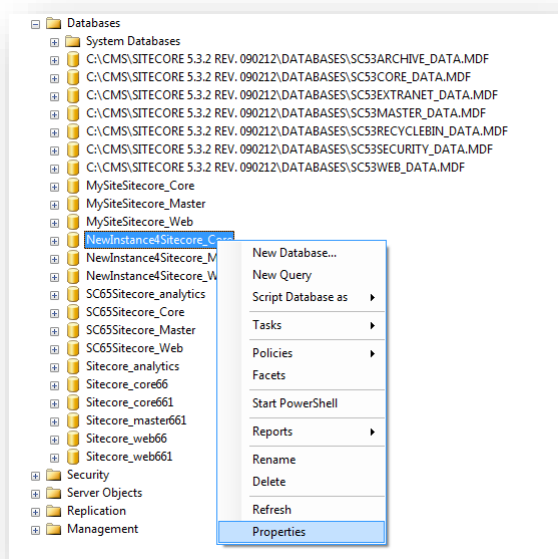
For the Sitecore.Sessions database:

- db_datareader
 - db_datawriter
 - public
9. Click **OK** to create the user.

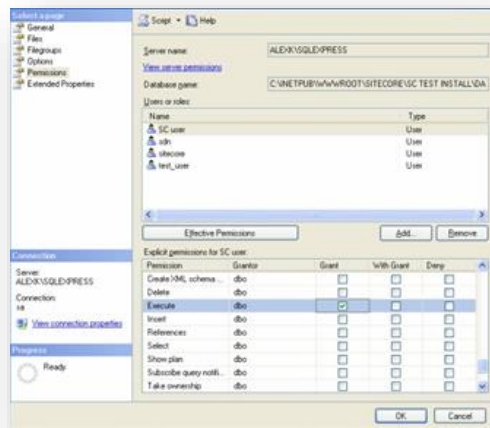
4.4.2 Granting Execute Rights to Stored Procedures

To grant execute rights to stored procedures:

1. In the **SQL Server Management Studio** window, expand Databases.



2. Right-click a Sitecore database, and then click **Properties**.



3. In the **Database Properties** window, select the **Permissions** section and select the user that you want to grant rights to.
4. In the **Users or roles** field, select the user and in the **Explicit permissions for** field, in the **Grant** column, give the user *Execute* permission.

Repeat this procedure for the other Sitecore databases.

Important

The analytics database for Sitecore xDB runs on MongoDB. For more information about configuring Sitecore xDB on MongoDB see the [xDB Configuration Guide](#).

Installing the Sitecore Experience Platform

4.5 Oracle Database Storage Setup

This section describes how to set up the Oracle database storage for Sitecore CMS.

The Oracle database storage setup is only available when Sitecore XP is running in Sitecore Experience Management mode (CMS-only mode), which lets you run Sitecore XP without the Experience Database (xDB) enabled.

For more information about Experience Management, refer to the Sitecore Documentation site – <https://doc.sitecore.net>.

Database Server Preparations

To set up the Oracle database storage, the database server must run a supported version of an Oracle database instance that meets the following requirements:

- The Oracle instance must be configured in shared server mode.
- The Oracle instance must contain a tablespace for Sitecore, having at least 200MB of free hard disk space.
- Additional hard disk space will be needed as the Sitecore database grows. Perform these steps on the Oracle Database Server (or a workstation PC with the administration tools for the Oracle instance) to set up Oracle databases for Sitecore CMS.

To load Sitecore data into the Oracle database:

1. Download the `Sitecore 8.2 rev. 161115 (oracle dbs).zip` file from the [Sitecore Developer Network](#) and unzip the file.
2. In a text editor, open the `createdata.bat` file located in the `\Databases\Oracle` folder and find the following node:

```
if "%DATABASE%" == "" set DATABASE=sitecore
if "%PASSWORD%" == "" set PASSWORD=manager
if "%TBS%" == "" set TBS=sitecore
if "%PREFIX%" == "" set PREFIX=sc
```

User-level variables	Description
DATABASE	The name of the Oracle Database instance that will host Sitecore data (As set up on the PC).
TBS	Name of the tablespace for Sitecore data.
PASSWORD	Password for the system user of the Oracle instance.
PREFIX	Prefix to use for user schema names and passwords. (Default: sc)

3. Specify the user-level variables as required and save your changes.
4. Launch the `createdata.bat` file from the `\Databases\Oracle\` folder.

At this point, installation scripts set up three user schemas:

- `%PREFIX%core`
- `%PREFIX%master`
- `%PREFIX%web`

Website Server Setup Instructions

The following instructions describe a web server setup where the Sitecore CMS file system is hosted.

Note

When you install the Oracle Data Provider in a 64-bit environment, you must use Oracle Client for Windows x64.

1. Install Sitecore XP. If you are installing Sitecore XP from a ZIP archive (and not from an .exe file setup) you should configure the `dataFolder` setting and copy a valid `license.xml` file to the `\Data` folder before proceeding to the next steps.
For more information, see the section *Installing the Sitecore XP from the .ZIP File*.
2. Backup the original `Web.config` file and rename the `Web.config.Oracle` file to `Web.config`.
3. Backup the original `Sitecore.config` file and rename the `Sitecore.config.Oracle` file to `Sitecore.config`.
4. Modify the connection strings in the `\App_Config\ConnectionStringsOracle.config` file to point to the valid Oracle instance.
 - The Data Source parameter must point to the local Oracle instance name as configured in the Oracle Net Manager.
 - User names and passwords must be adjusted to match those installed on the database server. The default usernames and passwords are:

Username	Password
sccore	sccore
scmaster	scmaster
scweb	scweb

Configure IIS as you normally would for a Sitecore installation, and then run Sitecore.

4.6 Uninstalling Sitecore XP

Before uninstalling Sitecore:

- Delete the IIS Website or update it to reference a different directory, or stop IIS by executing the following command:
 - `net stop w3svc.`
- Remove the Sitecore file system.
- Remove any databases on remote or local servers that are used by this instance of Sitecore.

Chapter 5

Sitecore XP Post-Installation Steps

This chapter describes the recommended steps that you should take after installing Sitecore XP 8.2.

This chapter contains the following sections:

- Content Expiration
- Windows Authentication for Sitecore
- Setting Microsoft SQL Server Database Properties
- Rebuild the Search Index and the Link Database
- Cache Configuration
- Deploy the Marketing Definition Items

Installing the Sitecore Experience Platform

5.1 Content Expiration

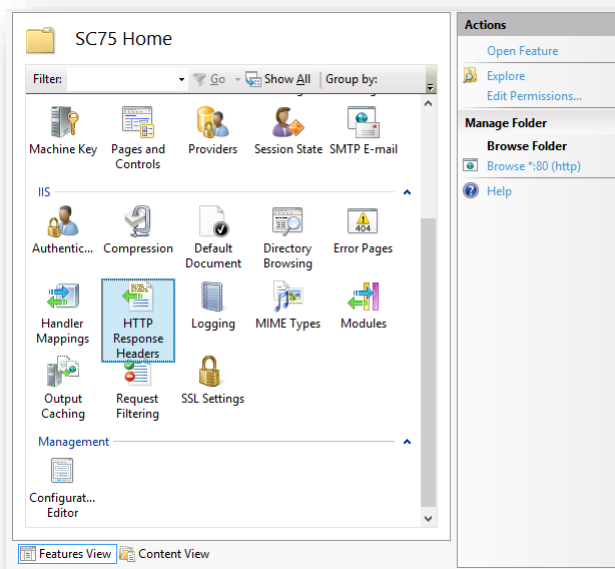
Set the IIS Expire Web content header to improve performance.

The Expire Web content header (located in common HTTP Response headers) is how IIS determines whether to return a new version of the requested web page if the request is made after the web page content has expired. IIS marks each web page before it is sent using the settings that you provide for content expiration. The website visitor's browser translates the expiration mark.

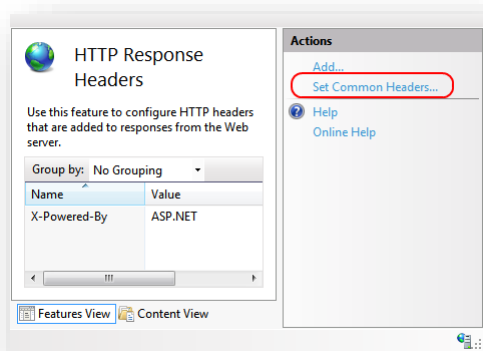
By setting Expire Web content to something other than *immediately*, you can reduce second-access load times by 50 to 70 percent. This setting does not affect dynamically-generated content.

To enable the Expire Web content header in IIS 7.x:

1. Launch IIS Manager.
2. Navigate to the site that you want to enable the Expire Web content header for.
3. In the **IIS** section, double click **HTTP Response Headers**.

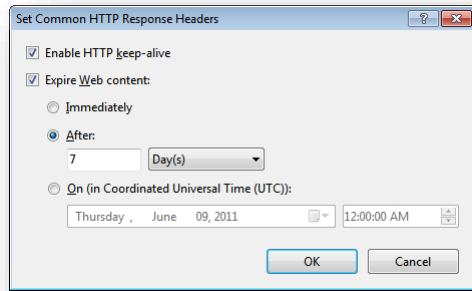


4. In the **Actions** panel, click **Set common headers...**



5. Select the **Expire Web content** check box.

6. Click **After**, and set the number of days to its default (7).

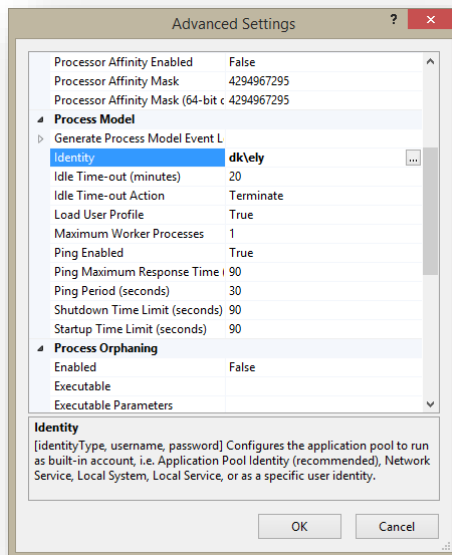


7. Click **OK**.

5.2 Windows Authentication for Sitecore

You can configure Sitecore to use Windows Authentication for SQL connection (Windows Server 2008 R2 SP3) and effectively remove the user name and password from the `connectionStrings.config` file.

1. Open IIS and find the application pool that Sitecore is running under. Open **Advanced Settings** and in the **Identity** field, set the identity to the domain user.



2. In the SQL Server, register the domain user and grant the appropriate security permissions to the Sitecore databases for the domain user.

For more information, see the section *Creating a Database Account for Sitecore XP Databases on SQL Server 2008, 2012 and 2014*.

3. On the computer that hosts Sitecore XP, add the domain user to the IIS_IUSRS group.
 - o Adjust the permissions for the IIS_IUSRS group according to the instructions in the sections: *File System Permissions for ASP.NET Requests* and *File System Permissions for System Folders*.
4. Edit the `\App_Config\ConnectionStrings.config` file and replace the user `id` and password parameters with `trusted_connection=Yes`.

```
<?xml version="1.0" encoding="utf-8"?>
<connectionStrings>
  <add name="core" connectionString="Data
Source=.\sql2008;Database=Sandbox6 Core;Trusted Connection=Yes" />
  <add name="master" connectionString="Data
Source=.\sql2008;Database=Sandbox6_Master;Trusted_Connection=Yes" />
  <add name="web" connectionString="Data
Source=.\sql2008;Database=Sandbox6 Web;Trusted Connection=Yes" />
</connectionStrings>
```

5. Prepare your identity so that it can be used as a service account with the `aspnet_regiis.exe` file and the [-ga switch](#).
6. To add your domain service account to the local *Performance Monitor Users* group, follow the instructions in the section *Windows Registry Permissions*.

Note

If you use xDB, the same configuration must be repeated for the Reporting database. The connection string for the Analytics database must be:

```
<add name="reporting" connectionString="Data
Source=<Data-Source>;Database=Sandbox6_Analytics;Trusted_Connection=Yes" />
```

5.3 Setting Microsoft SQL Server Database Properties

There are some Microsoft SQL Server database properties that, when configured correctly, can increase performance:

Compatibility Level

Compatibility Level affects SQL syntax and query parsing, and should have no impact on performance. Setting the Compatibility Level to a value of *SQL Server 2008(100)* takes advantage of new T-SQL features, which are used in many of the scripts/commands.

Auto Close

When MS SQL Server opens a database, resources are allocated to maintain that state. Memory for locks, buffers, security tokens, and so on are all assigned. These operations take time. The *Auto Close* property defines how these resources are handled. If it is set to *true* or *ON*, then when the last connection is closed, these resources are deallocated. If a new connection comes in within a short period of time ($1/10^{\text{th}}$ of a second or quicker), then all of those resources need to be activated again. Setting the *Auto Close* property to *false* or *OFF* prevents this from happening.

Auto Shrink

The Auto Shrink property uses many resources when it is called, and you have no control over when it is called. If you combine *Auto Shrink* with *Auto Growth*, you can get into a spiral of constantly growing and shrinking the database, taking valuable resources away from other database tasks as well as causing fragmentation issues. If a database or file requires a SHRINK command, it should be done via a script, a command, or a scheduled maintenance plan. Setting the *Auto Shrink* property to *false* or *OFF* disables this feature.

Recovery Model

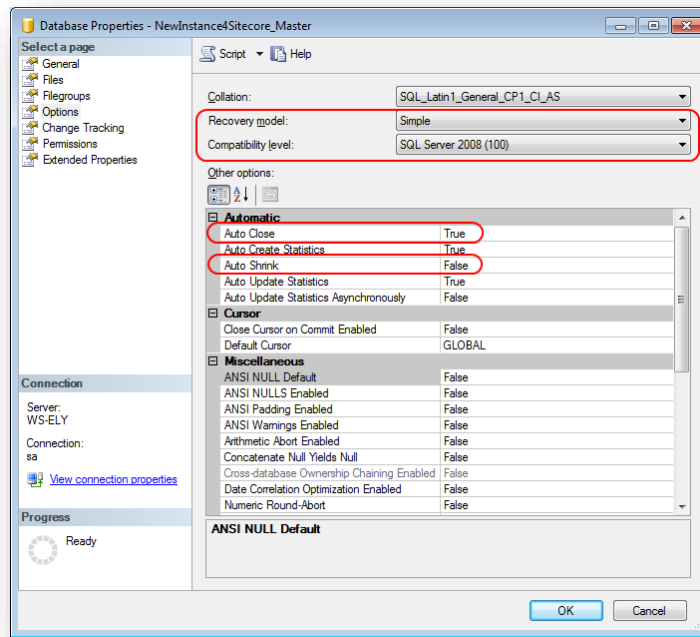
In the Simple Recovery Model, MS SQL Server records a minimal amount of information in the transaction log. MS SQL Server truncates the transaction log whenever the transaction log becomes 70 percent full or the active portion of the transaction log exceeds the size that MS SQL Server can recover in the amount of time that is specified in the Recovery Interval server level configuration. Setting the Recovery Model to Simple has the lowest amount of overhead over Full and Bulk-logged, which is crucial to the performance requirements needed for the Sitecore XP databases.

To set these properties:

1. Open **MS SQL Server Management Studio**.
2. In the **Object explorer**, right click the **CMS Master** database and select **Properties**.

Installing the Sitecore Experience Platform

3. Select the **Options** page and set the parameters as shown in the following image:



4. In the **Compatibility Level** field, select *SQL Server 2008(100)*.
5. Set the **Auto Close** property to *false*.
6. Set the **Auto Shrink** property to *false*.
7. In the **Recovery Model** field, select *Simple*.
8. Click **OK**.

Repeat these actions for the Sitecore Core and Web databases.

5.4 Rebuild the Search Index and the Link Database

Follow these instructions after you install Sitecore.

You should rebuild the Search Index for the Core database and the Quick search index.

Rebuilding the Search Indexes

To rebuild the Search Index:

- Log in to the Sitecore Desktop, click **Control Panel**, and then click **Indexing**. In the **Indexing Manager**, you can choose which database indexes you want to rebuild.

Rebuilding the Link Database

To rebuild the Link Database:

- Log in to the Sitecore Desktop and click **Control Panel**, **Database**, **Rebuild the Link Database** and select all the available databases.

5.5 Cache Configuration

When Sitecore XP is installed, you should optimize caching to improve solution performance, reduce server load, and increase system capacity.

For more information, see the [cache API changes](https://doc.sitecore.net/) topic for Sitecore 8.2 in the Sitecore Documentation Site – <https://doc.sitecore.net/>

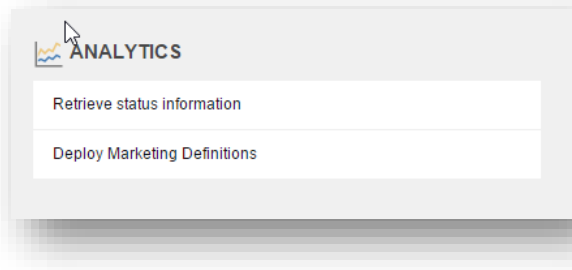
For more information about cache configuration, see the [Cache Configuration Reference](https://dev.sitecore.net/) document on the Sitecore Developer Network. – <https://dev.sitecore.net/>

5.6 Deploy the Marketing Definition Items

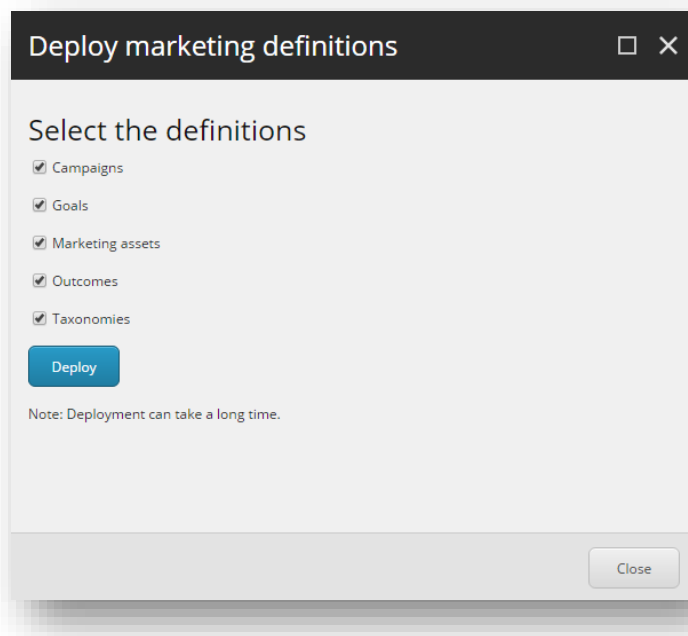
If you want to use the Sitecore Experience Marketing functionality, you must deploy the marketing definition items.

To do this:

1. Login to the Sitecore Experience Platform desktop.
2. Click **Control Panel** and navigate to the **ANALYTICS** section.



3. Click **Deploy Marketing Definitions**.
4. Check all check boxes and click **Deploy**.



Chapter 6

Configuring the Sitecore Experience Database

This chapter describes how to configure the Sitecore Experience Database.

The Sitecore Experience Database (Sitecore xDB) is a central data repository for marketers. It collects and connects all customer interactions in a single view, and enables immediate, personalized, automated experiences. Sitecore xDB uses MongoDB as a collection database.

This chapter contains the following sections:

- Prerequisites
- Configuration Process

6.1 Prerequisites

The Sitecore xDB 8.2 requires the following prerequisites for installation:

- Sitecore License file supporting Sitecore xDB
- Microsoft SQL Server 2008 R2 SP3, SQL Server 2012 or SQL Server 2014
- Microsoft Silverlight 5 or later
- MongoDB Database 2.6 MMAPv1, 3.0 MMAPv1, 3.0 Wired Tiger (for Sitecore xDB), 3.2.1 MMAPv1, 3.2.1 Wired Tiger and 3.2.1 Wired Tiger with encryption.

For more information on how to install MongoDB, see <http://docs.mongodb.org/manual/>.

6.2 Configuration Process

Sitecore xDB is included into the Sitecore XP package. You do not need to install it separately.

There are three steps to configuring Sitecore xDB:

- **Configuring the reporting database** – attach the `Sitecore.Analytics.mdf` database to SQL Server. This database is used for reporting.

- In the `ConnectionStrings.config` file, customize the following string:

```
<add name="reporting" connectionString="user id= username ;password= password ;Data Source=_server_;Database=Sitecore_Analytics" />
```

Note

You can create a database account with the minimum required permissions for the Analytics database as described in the section [Microsoft SQL Server Configuration](#).

- **Installing MongoDB** – download and install the latest version of MongoDB.
- **Configuring Sitecore to use Mongo databases** – perform the actions outlined in the following procedure for each Mongo server.

To configure Sitecore to use Mongo databases:

1. In the `ConnectionStrings.config` file, specify the connection strings to your MongoDB server:

```
<add name="analytics" connectionString="mongodb://localhost/analytics" />
<add name="tracking.live" connectionString="mongodb://localhost/tracking_live" />
<add name="tracking.history" connectionString="mongodb://localhost/tracking_history" />
/>
<add name="tracking.contact" connectionString="mongodb://localhost/tracking_contact" />
```

2. In the `Sitecore.Analytics.config` file, in the relevant settings, update the `Analytics.EmailFromAddress` (for sending out reports as emails) attributes value.
3. In the `Sitecore.config` file, in the relevant settings, update the `MailServer` attributes value.
4. If you want to use Sitecore XP with Sitecore MVC, in the `\App_Config\Include` folder, rename the `Sitecore.MvcAnalytics.config.disabled` file to `Sitecore.MvcAnalytics.config`.
5. To limit the lookup activity to one server, in the `\App_Config\Include\Sitecore.Analytics.config` file, update the `Analytics.PerformLookup` setting.
6. To hash IP addresses before they are stored in xDB, in the `Sitecore.Analytics.config` file, update the `RedactIpAddress` setting.

Important

To ensure that hashing is secure, you must also change the default salt value in the `Sitecore.Analytics.config` file, in the `geoIpManager` section.

7. Restart Internet Information Services (IIS).

For more information about configuring Sitecore xDB to use with Sitecore XP, as well as the scalability of Sitecore xDB architecture, see the Sitecore Documentation site – <https://doc.sitecore.net/>.

Chapter 7

Appendix

This chapter contains the supplementary instructions that help you configure your environment.

This chapter contains the following sections:

- Server Configuration

7.1 Server Configuration

The following sections contain miscellaneous information and techniques concerning the server configuration.

7.1.1 Updating the Security Settings for a Folder

To update the security settings for a folder:

1. In **Windows Explorer**, right-click the folder and select **Properties**.
2. In the **Properties** dialog box, click the **Security** tab.
3. In the **Group or user names** field, select a user or group and grant them the appropriate permissions in the **Permissions for** field.
4. In the **Security** tab, click **Advanced**.
5. In the **Advanced Security Settings** dialog box, select the **Replace permission entries** checkboxes.