



# Sitecore Media Framework 2.1 Ooyala Edition

# Administrators Guide

*Installation & Configuration Guide*

## Table of Contents

Chapter 1	Installation .....	3
1.1	Prerequisites .....	4
1.2	Installation Steps .....	5
1.2.1	Install Sitecore Media Framework 2.1 .....	5
1.2.2	Release Page Events from Workflow.....	5
1.2.3	Install Sitecore Media Framework Ooyala Edition 2.0 .....	6
1.2.4	Reporting Database Configuration .....	6
1.2.5	Multi-Server Configuration .....	6
Chapter 2	Upgrading.....	8
2.1	Upgrading from Media Framework 2.0 .....	9
2.2	Upgrading from Media Framework 1.4 (an earlier) .....	10
Chapter 3	Account Configuration.....	11
3.1	Get Account Credentials from Ooyala Backlot.....	12
3.2	Add Ooyala Account to Sitecore .....	13
Chapter 4	Media Import .....	15
4.1	Manual Media Import .....	16
4.2	Automatic Media Import .....	20
Chapter 5	Media Export .....	21
5.1	Automatic Media Export .....	22
5.1.1	Real Time Exports.....	22
5.1.2	Preventing Automatic Export.....	22
Chapter 6	Media Cleanup .....	23
6.1	Sitecore Cleanup.....	24
6.1.1	Manual Cleanup .....	24
6.1.2	Automatic Cleanup .....	24
6.2	Ooyala Cleanup .....	25

# Chapter 1 Installation

This chapter covers the installation of the module.

## 1.1 Prerequisites

Before installing the module, be sure the following have been completed:

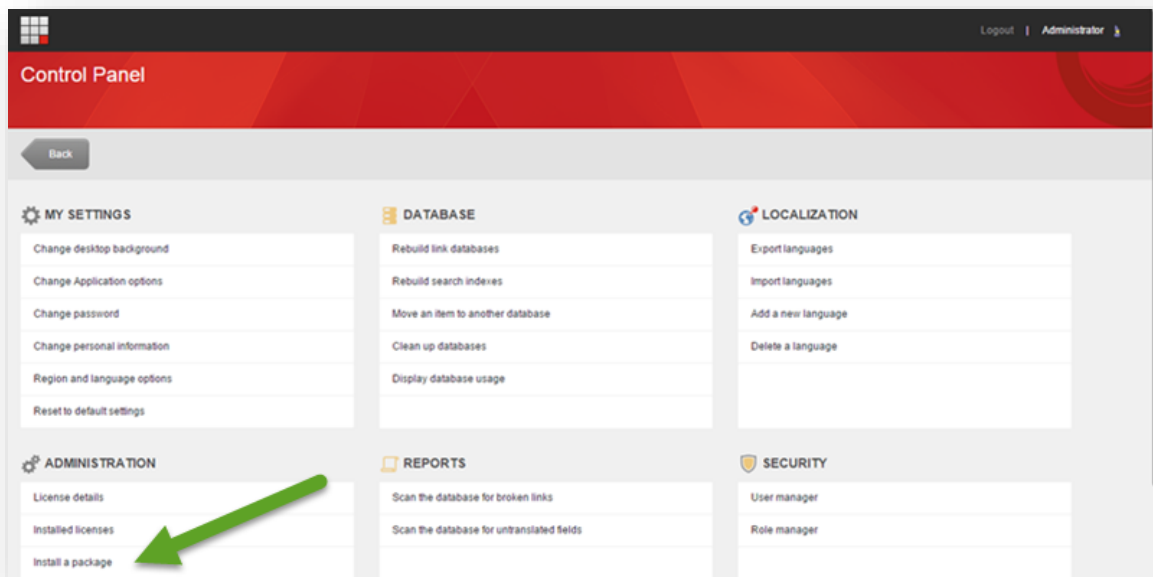
- The appropriate version of Sitecore Experience Platform is installed.
- Ooyala Backlot account is available.

## 1.2 Installation Steps

This section covers the installation process for the module.

### 1.2.1 Install Sitecore Media Framework 2.1

Sitecore Media Framework is installed using the Sitecore Installation Wizard. Follow the instructions displayed by the installation wizard.

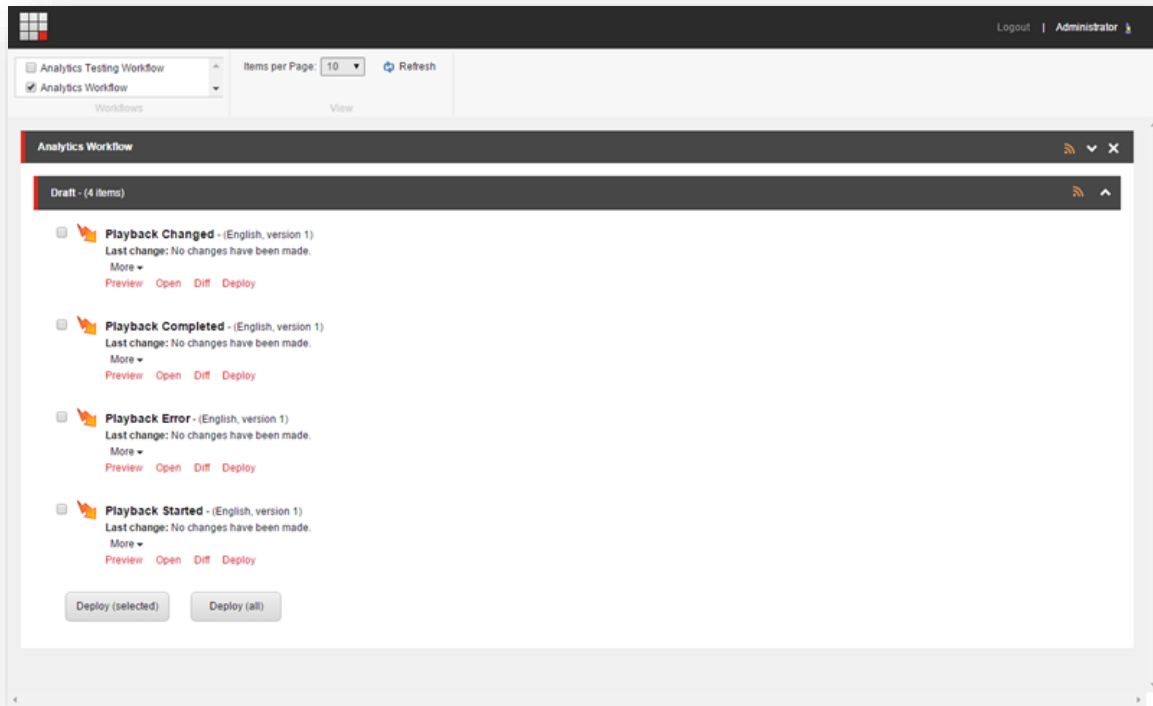


### 1.2.2 Release Page Events from Workflow

Sitecore Media Framework includes a number of page events that must be released from workflow and published before they can be used.

1. Open the Sitecore Workbox
2. Select the Analytics Workflow

3. Deploy the following page events:
  - a. Playback Changed
  - b. Playback Completed
  - c. Playback Error
  - d. Playback Started



4. Publish the page events

### 1.2.3 Install Sitecore Media Framework Ooyala Edition 2.0

Sitecore Media Framework Ooyala Edition is installed using the Sitecore Installation Wizard. Follow the instructions displayed by the installation wizard.

### 1.2.4 Reporting Database Configuration

In order for the Sitecore Media Framework reports to work, a new fact table must be added to the Experience Database (xDB) reporting database.

A script that will create this new table is available on SDN. You must run this script on your xDB reporting database. This step should be completed by your database administrator.

#### Note

It is possible to install multiple Sitecore Media Framework connectors. This script only needs to be run one time per reporting database, regardless of how many different connectors you have installed.

### 1.2.5 Multi-Server Configuration

Sitecore Media Framework can be installed in a multi-server content authoring environment. If your Sitecore environment is configured in this way, you need to configure the following.

## Content Management Servers

If you are using the scheduler to synchronize media, only one content management (CM) server needs to have the scheduler configured. Remove the scheduled job from the config files on the other CM servers. The Sitecore event queue will handle keeping the other CM servers in sync.

### Note

Configuring the scheduler on multiple CM servers will not cause a problem, but there is no benefit to doing so.

## Content Delivery Servers

On each content delivery (CD) server remove the following index from the specified config file. This index is only needed in the CM environment.

- **File:** Sitecore.ContentSearch.MediaFramework.Ooyala.config
- **Index name:** mediaframework\_ooyala\_index

When configuring CD servers you may find it convenient to copy config files from a CM server. If you do this and you have added a scheduler to synchronize media you should remove the scheduled job from the config files on the CD servers. Media synchronization should not run on the CD servers. It should run on one CM server. Publishing is used to make the media items available on the CD servers.

## Chapter 2 Upgrading

This section contains information on how to upgrade to Sitecore Media Framework Ooyala Edition 2.1.



## 2.1 Upgrading from Media Framework 2.0

To upgrade from version 2.0 to version 2.1 you must do the following:

1. Upgrade your Sitecore server to Sitecore 8.0 update 1 (or greater).
2. Install the package for Media Framework 2.1. Overwrite any existing items and files.
3. Install the package for Media Framework Ooyala Edition 2.1. Overwrite any existing items and files.
4. Republish the master database.
5. Run the database script on the Sitecore reporting database.

## 2.2 Upgrading from Media Framework 1.4 (an earlier)

To upgrade from version 1.4 (or earlier) to version 2.1 you must upgrade to Media Framework 2.0. Upgrade instructions are available in the Media Framework 2.0 administrators guide.

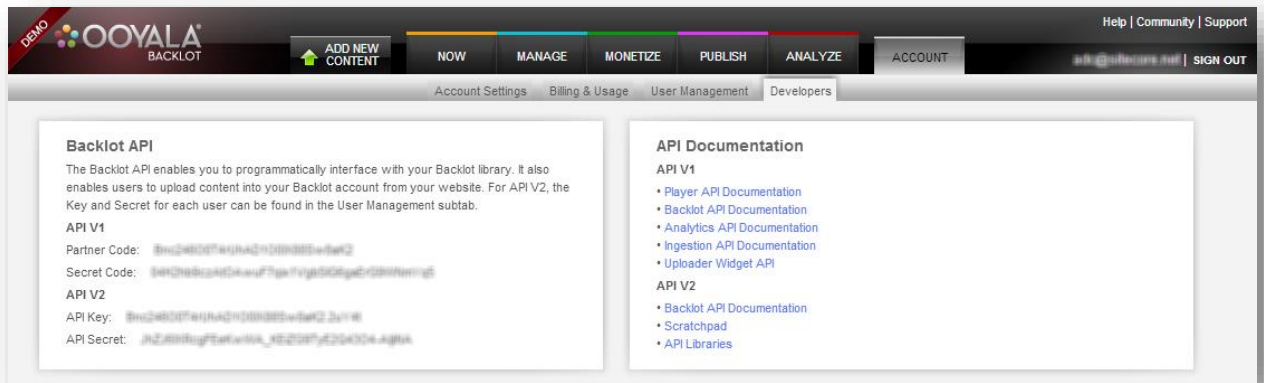
## Chapter 3 Account Configuration

This chapter covers how to create an account in Sitecore that corresponds with an Ooyala Backlot account.

### 3.1 Get Account Credentials from Ooyala Backlot

In order for Media Framework to connect to Ooyala, the account credentials from Ooyala must be added to Sitecore. This section describes how to locate the account credentials in Ooyala Backlot. The following section describes how to add those credentials to Sitecore.

1. Log into Ooyala Backlot
2. Navigate to Account > Developers

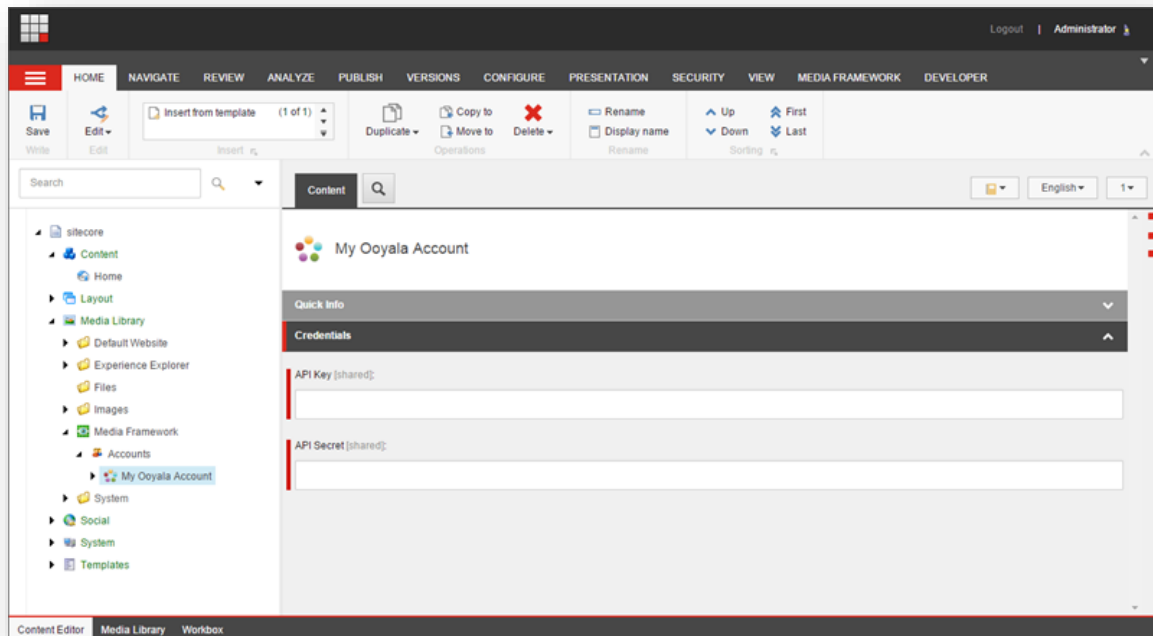


3. Note the following values. You will need to enter them into Sitecore in the following section:
  - a. API Key
  - b. API Secret

## 3.2 Add Ooyala Account to Sitecore

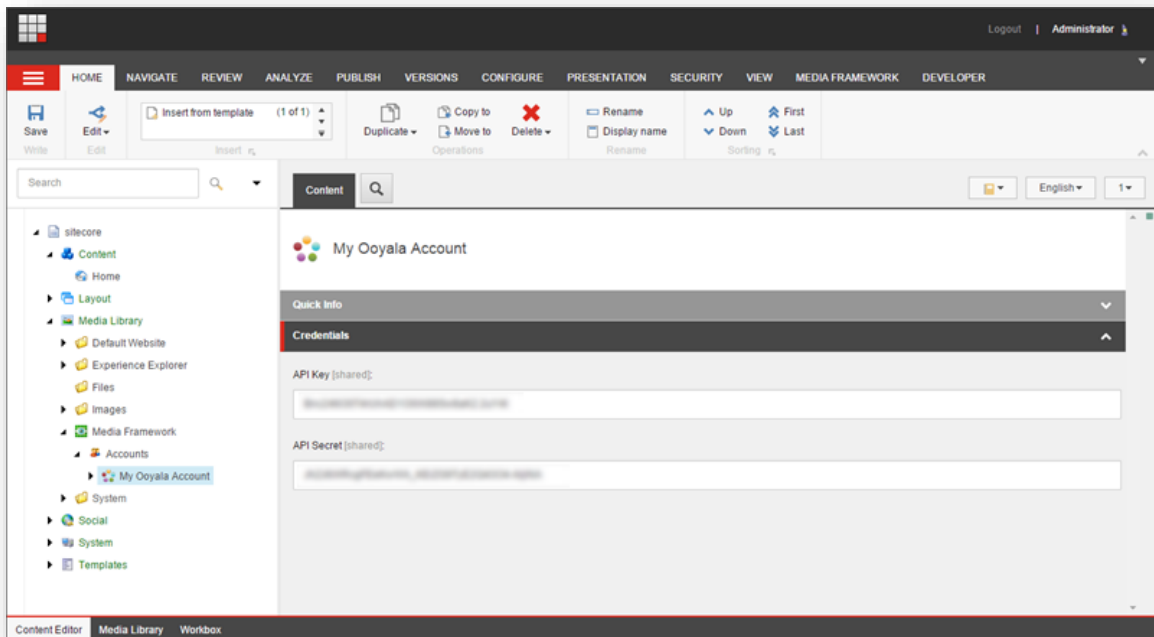
This section describes how to add an Ooyala account to Sitecore.

1. Log into the Sitecore Desktop
2. Connect to the master database
3. Open Media Library
4. Navigate to Media Library > Media Framework > Accounts
5. Add a new Ooyala Account item. For these instructions I am naming my item "My Ooyala Account".



## Sitecore Media Framework 2.1 Ooyala Edition Administrators Guide

6. Enter the API Key and API Secret values noted in the previous section.



7. Save the item.

## Chapter 4 Media Import

In order to efficiently use Ooyala media in Sitecore, Sitecore items are needed to represent the Ooyala media. The process by which these Sitecore items are created and updated is called the media import process.

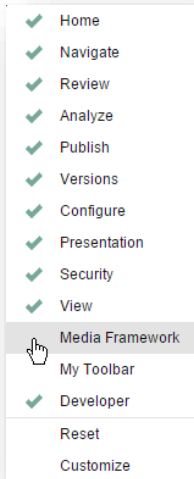
Before Ooyala media can be used in Sitecore, the media import process must run. In addition, if Sitecore and Ooyala are to be kept in sync, the media import process must run periodically.

This chapter covers the media import process.

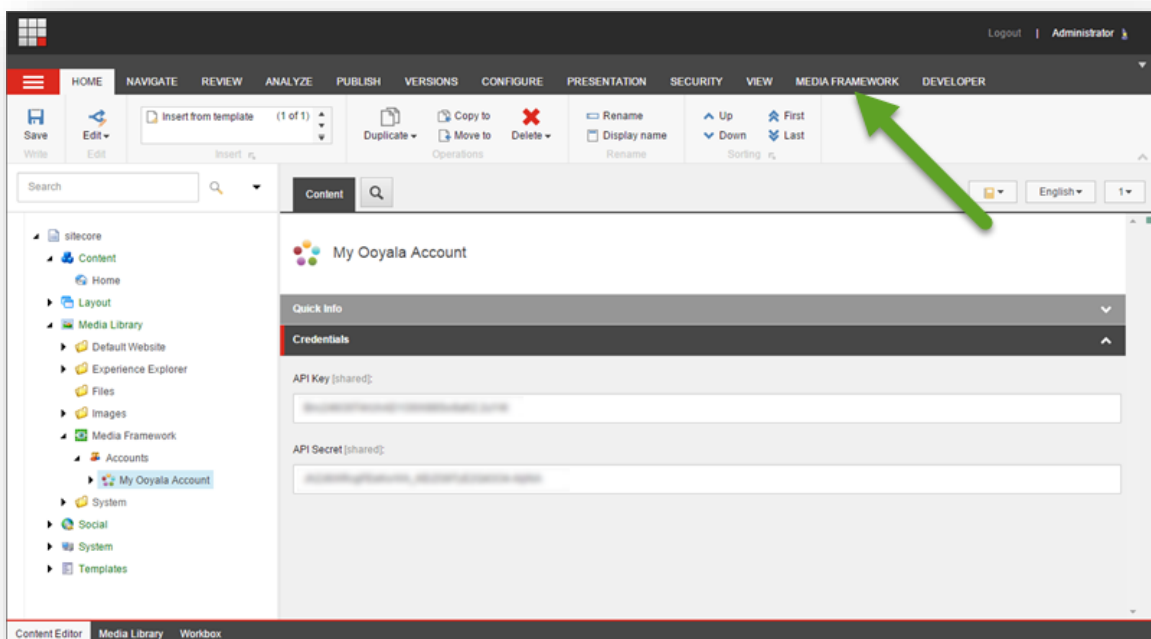
## 4.1 Manual Media Import

A Sitecore content author or administrator can manually trigger the media import process.

1. Display the Media Framework ribbon by right-clicking the top-menu and selecting Media Framework.

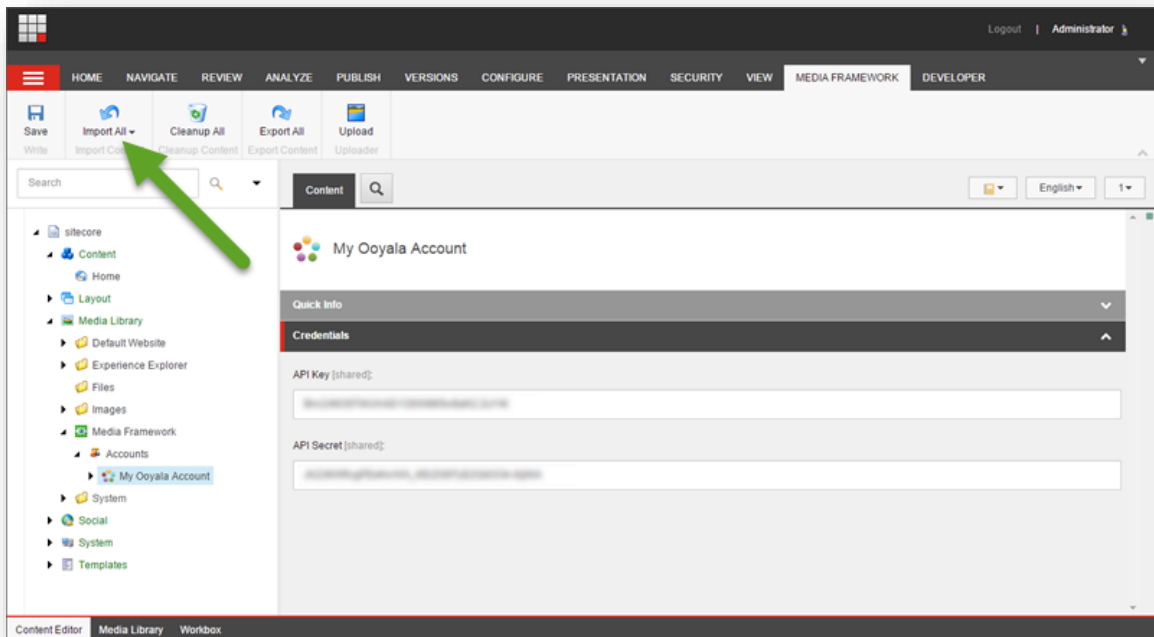


2. Click the Media Framework ribbon.

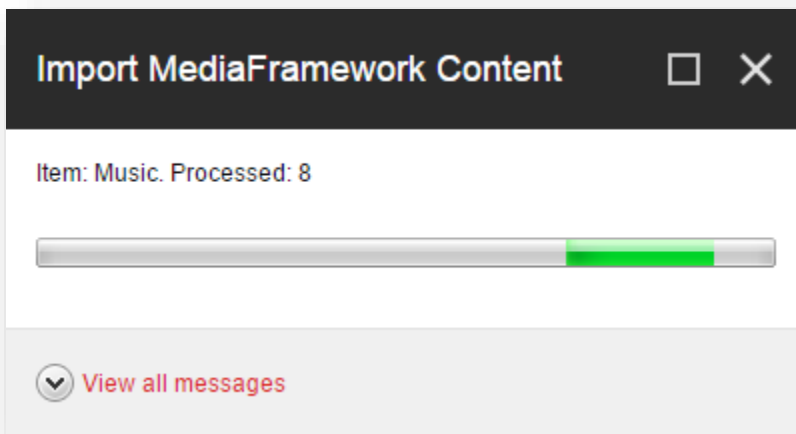




3. Click the Import All button.

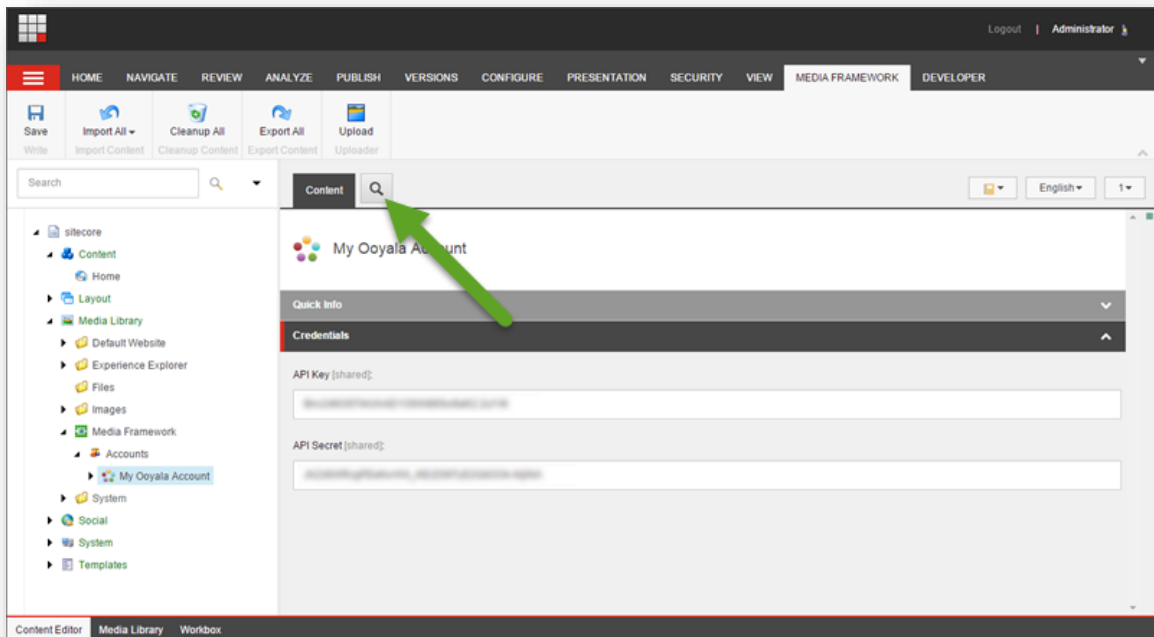


4. As the import process runs, a status box appears. When the status box disappears, the import process is complete.

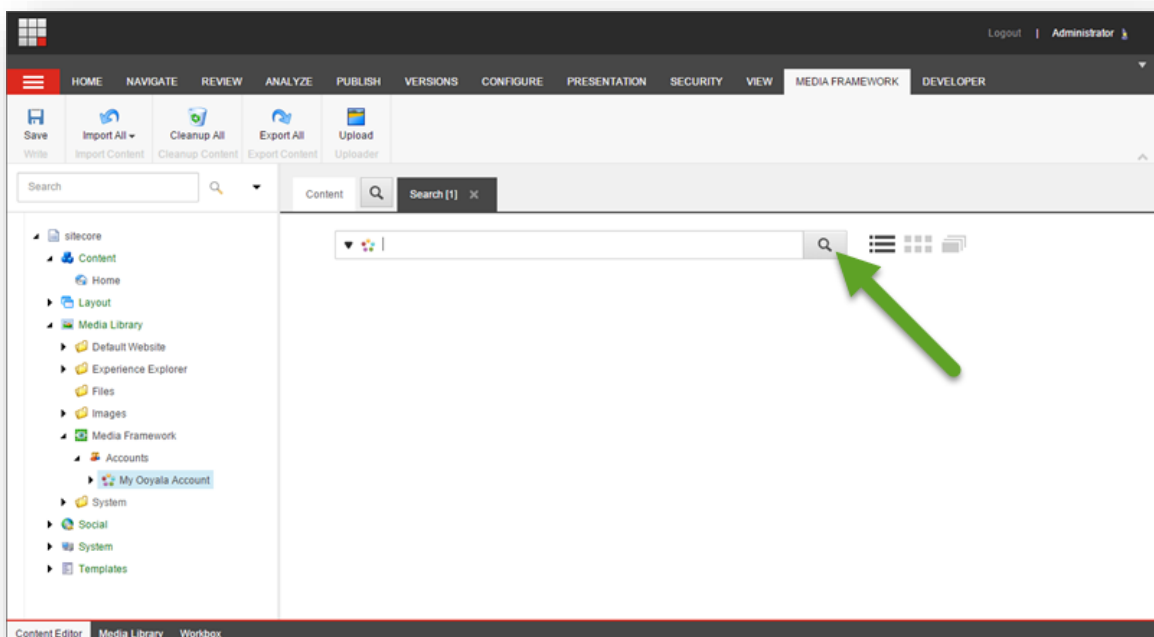


## Sitecore Media Framework 2.1 Ooyala Edition Administrators Guide

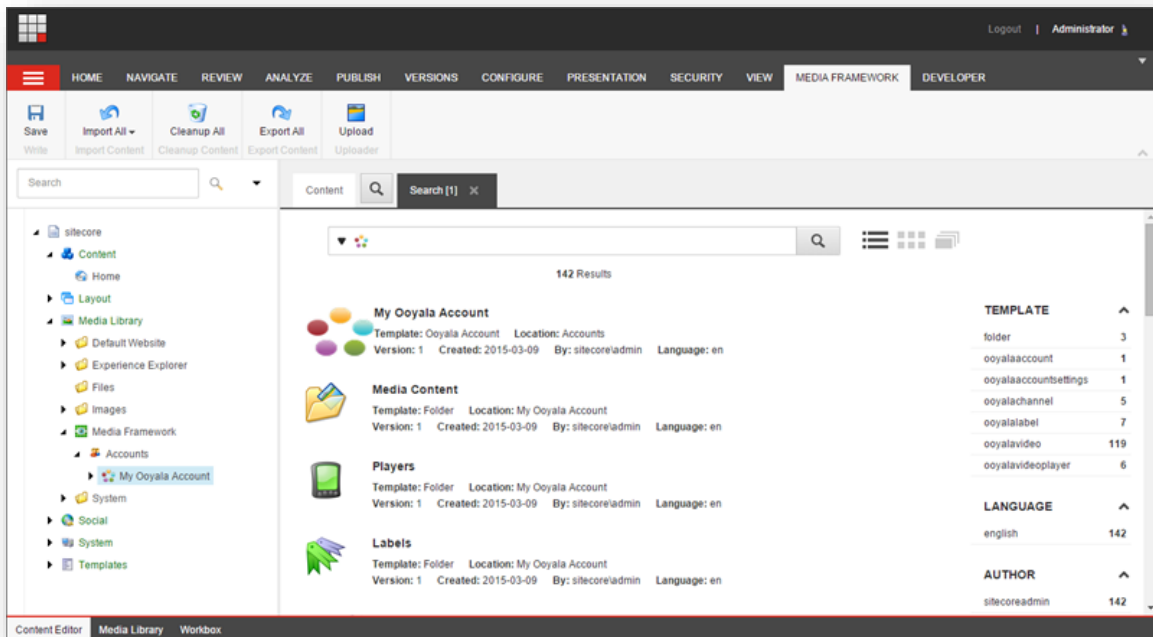
5. To confirm media has been imported, click the Search tab.



6. Perform a search.



7. Search results are displayed.



## 4.2 Automatic Media Import

The Ooyala Video Connector includes an agent that automatically synchronizes media on a regular basis. The agent is defined in the following location:

<b>Config file:</b>	Sitecore.MediaFramework.Services.Ooyala.config
<b>Agent name:</b>	MediaFramework_Import_Ooyala

## Chapter 5 Media Export

Within Sitecore, Ooyala media is accessed using Sitecore items that are created during the media import process. Since they are Sitecore items, it is possible for users to change those items. The media export process is responsible for exporting changes from Sitecore to Ooyala.

This chapter covers the media export process.

## 5.1 Automatic Media Export

When a Sitecore item that corresponds to Ooyala media is created, saved or deleted in the Sitecore client, those changes will be pushed to Ooyala.

### 5.1.1 Real Time Exports

When a new media item is created in Sitecore, a real time export is performed. This means that the export task is performed immediately.

### 5.1.2 Preventing Automatic Export

You may not want changes made in Sitecore to be exported to Ooyala. You may want the connection from Sitecore to Ooyala to be read-only, where Ooyala changes are imported to Sitecore but where Sitecore changes are not exported to Ooyala.

In order to prevent changes made in Sitecore from being exported to Ooyala, clear the value of the following setting:

<b>Config file:</b>	Sitecore.MediaFramework.config
<b>Setting name:</b>	Sitecore.MediaFramework.ExportDatabases

**NOTE:** This setting applies to the Sitecore Media Framework, not just the Ooyala Video Connector. Changing this setting will apply to all connectors and all accounts.

## Chapter 6 Media Cleanup

The media cleanup process addresses issues that arise when dealing with synchronized content:

- What happens when media is deleted from Ooyala?
- What happens when a media item is deleted from Sitecore?

This chapter covers the media cleanup process.

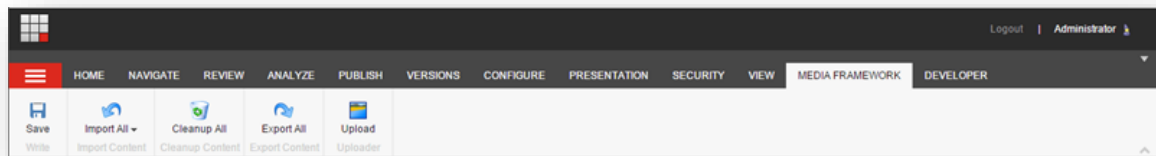
## 6.1 Sitecore Cleanup

Sitecore cleanup is the process that runs when media is deleted in Ooyala and the corresponding Sitecore items must be deleted. Since Ooyala knows nothing about Sitecore, Ooyala cannot notify Sitecore that media has been deleted. Therefore, Sitecore must be proactive.

### 6.1.1 Manual Cleanup

A Sitecore content author or administrator can manually trigger the cleanup process by clicking the following button in Content Editor:

<b>Strip:</b>	Media Framework
<b>Chunk:</b>	Cleanup Content
<b>Button:</b>	Cleanup All



### 6.1.2 Automatic Cleanup

The Ooyala Video Connector includes an agent that automatically runs the cleanup process on a regular basis. The agent is defined in the following location:

<b>Config file:</b>	Sitecore.MediaFramework.Services.Ooyala.config
<b>Agent name:</b>	MediaFramework_Cleanup_Ooyala



## 6.2 Ooyala Cleanup

Ooyala cleanup is the process that runs when a media item is deleted in Sitecore and the corresponding media in Ooyala must be deleted or disabled. Since Ooyala knows that the media item was deleted, Sitecore is able to notify Ooyala that the corresponding media in Ooyala should be deleted or disabled.

When a media item is deleted in the Sitecore client, an entry is made in the export queue. The process is the same as when a media item is saved. For more information see section 5.1.