

PXM Server Installation Guide

Sitecore XP 8.0

Installing PXM for Individual Workstation and Automated Document Service



sitecore[®]
Own the experience[™]

Table of Contents

Chapter 1	Introduction	3
1.1	Overview	4
Chapter 2	The PXM Core Package	6
2.1	The Print Experience Manager Package	7
2.2	Importing the Package	8
Chapter 3	Configurations for IDC and ICC	10
3.1	Configuring Sitecore	11
3.1.1	Configuring the Logger	11
3.2	Configuring PrintStudio.config	12
3.2.1	Print Studio Engine Settings	12
3.3	Pipelines	13
3.4	Client Side	14
Chapter 4	Configuring InDesign Server	15
4.1	Creating Folders	16
4.2	Changing the Print Studio Settings in Sitecore	18
4.3	Configuring Print Studio Web Services	19
4.4	Print Studio Configurations Settings	20
4.5	The Pipelines Section	22
4.6	Installing the InDesign Server Engine and Windows Services	23
4.6.1	Snap-in	23
4.6.2	InDesign Server Engine	25
4.6.3	Installing the Dashboard Service	26
4.6.4	Installing the InDesign Processing Service	28
4.6.5	PDF Settings	30
Chapter 5	Troubleshooting	31
5.1	Typical Troubleshooting Scenarios	32
5.1.1	Publishing Error	32
5.1.2	Snap-in Unavailable for 64-bit Service	32
5.1.3	Window Services Fails after Upgrade	32
5.1.4	Rich Text Field not Visible	32
5.1.5	Unable to Save Master Documents	33
5.1.6	Media Files Unavailable	33

Sitecore® is a registered trademark. All other brand and product names are the property of their respective holders. The contents of this document are the property of Sitecore. Copyright © 2001-2017 Sitecore. All rights reserved.

Chapter 1

Introduction

This document describes how to install the Sitecore Print Experience Manager core package on the server.

Chapters 1, 2, and 3 describe the requirements and setup settings necessary for working with InDesign Connector and/or InCopy Connector. If you want the work with the InDesign Server, please refer to chapter 4.

- Chapter 1 – Introduction
This chapter describes the system requirements.
- Chapter 2 – The PXM Core Package
This chapter describes how to download and import the Print Experience Manager package. It also describes the IIS preparations.
- Chapter 3 – Configurations for IDC and ICC
This chapter describes the configuration settings that you need if you want to work with InDesign Connector or InCopy Connector.
- Chapter 4 – Configuring InDesign Server
This chapter describes the configuration settings that you need if you want to work with InDesign Server.
- Chapter 5 – Troubleshooting
This chapter describes the solutions to the most common installation issues.

1.1 Overview

The Print Experience Manager can be installed in several different integrations.

- Individual Workstation – The plugins enable you to connect to the PXM repository in Sitecore. You can load documents, associate content from Sitecore, and so on.

The possible scenarios are:

- Using Sitecore content in InDesign documents.
- Using Sitecore content for structured InDesign productions.
- Using Sitecore content for structured InDesign productions and editing IDC documents in InCopy Connector.

- Automated Document Service – If you want to use Sitecore content in automatically generated InDesign documents, you need InDesign Server.

The possible scenarios are:

- Print Experience Manager 8.0 rev. xxxxxx.zip – Creating complex personalized PDFs.

This manual describes the installation procedures for all of these scenarios.

		Individual Workstation	Automatic Document Generation
System Requirements	Sitecore XP 8.0, 8.1, and 8.2. This version is also compatible with Sitecore 7.1 and later versions.	X	X
	Adobe InDesign CC or Adobe InDesign CC 2014 (and if required: Adobe InCopy CC or Adobe InCopy CC 2014)	X	X
	Adobe InDesign Server CC or Adobe InDesign Server CC 2014		X
	Microsoft Message Queuing		X
	SMTP service		X
Sections to read in this manual	Chapter 1, 2, and 3.	X	X
	All chapters		X
Packages to install	Print Experience Manager 8. rev. xxxxxx.zip	X	X
Client Plugins to install	InDesign Connector plugin	X	X
	InCopy Connector plugin	X	X
Server Plugins to install	InDesign Server engine		X
Windows Services to install	Dashboard Service		X
	InDesign Processing Service		X
Configurations for Sitecore	Logger (web.config)	X	X
	Web services (web.config)	X	X
Configurations for PXM	Dashboard Service – DashBoardServer.exe.config		X
	InDesign Processing Service InDesignProcessingService.exe.config		X

PXM Server Installation Guide

		Individual Workstation	Automatic Document Generation
	Print studio settings – PrintStudio.config	X	X

Note

If you want to update an existing version, please refer to the update information on <https://dev.sitecore.net>.

Chapter 2

The PXM Core Package

This chapter contains the following sections:

- The Print Experience Manager Package
- Importing the Package

2.1 The Print Experience Manager Package

The Print Experience Manager package includes:

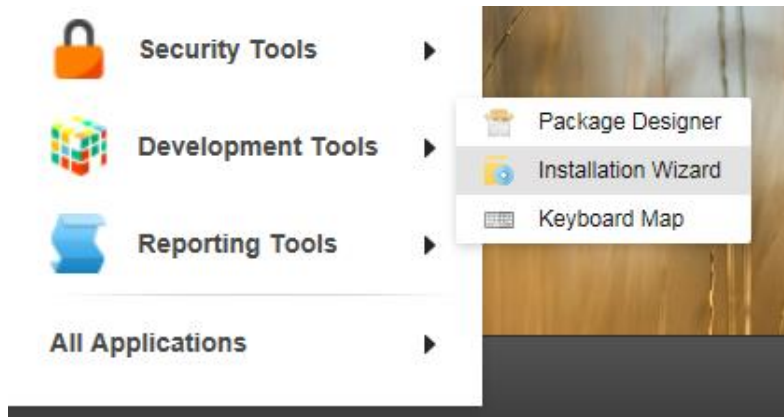
- Sitecore items related to publishing (templates, rules, field types, and so on)
- Web service for InDesign Connector
- Http handler for InDesign Connector
- Publishing Engine Library
- Configuration (base configuration file and web service)

2.2 Importing the Package

Download the installation package –Print Experience Manager 8.0 rev. xxxxxx.zip– from dev.sitecore.net on your server or system.

To import the package:

1. Log in to Sitecore.
2. Navigate to **Development Tools** and open the **Installation Wizard**.



3. In the wizard, click **Upload package**, browse to find the Print Experience Manager 8.0 rev. xxxxxx.zip, click **Next** and **Close**.
4. Click **Next**.

Install a Package ✕

Select a package to install.

Name:

PXM 8.0 rev. xxxxxx.zip

Choose package Upload package

Next Cancel

5. Read the License Agreement and select the appropriate radio button. Click **Next**.
6. Click **Install**.
The installation starts and will need approximately 5-10 minutes to finish.
7. Click **Finish**.

Chapter 3

Configurations for IDC and ICC

This chapter describes the configurations necessary at the server-side.

This chapter contains the following sections:

- Configuring Sitecore
- Configuring PrintStudio.config
- Pipelines
- Client Side

3.1 Configuring Sitecore

This section describes how to configure the `web.config` file in the Sitecore *website* folder.

3.1.1 Configuring the Logger

To configure the logger:

1. Open `web.config` file from Sitecore Website folder.
2. Navigate to the `<log4net>` section and after the last `</appender>` item paste:

```
<appender name="PXMPrintServiceAppender" type="log4net.Appender.SitecoreLogFileAppender,
Sitecore.Logging">
  <file value="$(dataFolder)/logs/printstudio.log.{date}.txt"/>
  <appendToFile value="true"/>
  <layout type="log4net.Layout.PatternLayout">
    <conversionPattern value="%4t %d{ABSOLUTE} %-5p %m%n"/>
  </layout>
</appender>
<logger name="Sitecore.PXM.Diagnostics" additivity="false">
  <level value="INFO"/>
  <appender-ref ref="PXMPrintServiceAppender"/>
</logger>
```

3. Save the `web.config` file.

3.2 Configuring PrintStudio.config

This section describes how to configure the `Sitecore.PrintStudio.config` file. This file is stored in the `\Website\App_Config\Include\PXM` folder.

3.2.1 Print Studio Engine Settings

In the `PrintStudio.config` file, the `Printstudio.ProjectsFolder` is the configuration key for the path to the projects folder.

```
<printstudioengine type="Sitecore.PrintStudio.Configuration.SettingsSection,
Sitecore.PrintStudio.Configuration">
  <settings hint="raw:AddToSettingsList">
    <setting name="PrintStudio.ProjectsFolder"
value="C:\inetpub\sitecore folder\Website\projects\" />
    <setting name="PrintStudio.InDesignServerName" value="InDesignServer.Application.CC" />
    <setting name="PrintStudio.StoreMastersInDB" value="true" />
    <setting name="PrintStudio.PublishingCachePath"
value="C:\PXMPublishing\PublishingCache\" />
    <setting name="PrintStudio.PrintDashboardQueueName" value="InDesignServerCC"/>
    <setting name="PrintStudio.DBServer.IPAddress" value="localhost" />
    <setting name="PrintStudio.DBServer.Port" value="8081" />
  </settings>
</printstudioengine>
```

Note

Make sure to have sufficient access rights to the `PrintStudio.ProjectsFolder`.

3.3 Pipelines

By default, the configuration settings for the pipelines section are in the `PrintStudio.config` file.

You only need to change these in customized setups.

```
<pipelines>
  <printToDashboard>
    <processor type="Sitecore.PublishingEngine.Pipelines.SetProcessingJob,
Sitecore.PublishingEngine" />
    <processor type="Sitecore.PublishingEngine.Pipelines.RenderProjectXml,
Sitecore.PublishingEngine" />
    <processor
type="Sitecore.PublishingEngine.Pipelines.Dashboard.SendToDashboard,
Sitecore.PublishingEngine" />
  </printToDashboard>
  <printToInDesign>
    <processor type="Sitecore.PublishingEngine.Pipelines.RenderProjectXml,
Sitecore.PublishingEngine" />
    <processor
type="Sitecore.PublishingEngine.Pipelines.InDesign.SendToInDesign,
Sitecore.PublishingEngine" />
  </printToInDesign>
  <renderXml>
    <processor type="Sitecore.PublishingEngine.Pipelines.RenderProjectXml,
Sitecore.PublishingEngine" />
  </renderXml>
  <printPreview>
    <processor type="Sitecore.PublishingEngine.Pipelines.RenderProjectXml,
Sitecore.PublishingEngine" />
    <processor
type="Sitecore.PublishingEngine.Pipelines.InDesign.GeneratePreview,
Sitecore.PublishingEngine" />
  </printPreview>
  <convertHtmlToXml>
    <processor
type="Sitecore.PublishingEngine.Pipelines.ConvertHtmlToXml.PrepareHtml,
Sitecore.PublishingEngine" />
    <processor
type="Sitecore.PublishingEngine.Pipelines.ConvertHtmlToXml.ConvertToXml,
Sitecore.PublishingEngine" />
    <processor
type="Sitecore.PublishingEngine.Pipelines.ConvertHtmlToXml.FinalizeXml,
Sitecore.PublishingEngine" />
  </convertHtmlToXml>
  <convertXmlToHtml>
    <processor
type="Sitecore.PublishingEngine.Pipelines.ConvertXmlToHtml.ConvertToHtml,
Sitecore.PublishingEngine" />
  </convertXmlToHtml>
</pipelines>
```

The configuration settings in the pipelines section:

Configuration key	Description
printToDashboard	Invokes a publishing processing job and publishes through the Dashboard server. The result is sent in an e-mail message.
printToInDesign	Used for publishing directly to the InDesign Server. Can be invoked from a layout on the website. The result is placed on the appropriate path and the user should fetch it through the resulting URL.
renderXml	Invokes an XML rendering and only generates the XML. Invoked from the InDesign Connector plug-in web service.
printPreview	Produces a preview.
convertHtmlToXml	Converts HTML to XML.
convertXmlToHtml	Converts XML to HTML.

3.4 Client Side

To run InDesign Connector and InCopy Connector, you can download the setups from <https://dev.sitecore.net>

If you want to work with automated productions and InDesign Server, you must follow the procedures described in the next chapter.

Chapter 4

Configuring InDesign Server

This chapter describes the configurations and installations that are required to work with InDesign Server.

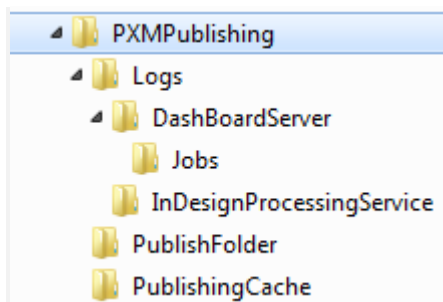
This chapter contains the following sections:

- Creating Folders
- Changing the Print Studio Settings in Sitecore
- Configuring Print Studio Web Services
- Print Studio Configurations Settings
- The Pipelines Section
- Installing the InDesign Server Engine and Windows Services

4.1 Creating Folders

We recommend that you organize the folder tree within a parent folder named *PXMPublishing*, that is located outside the Sitecore *website* folder. The *PXMPublishing* folder requires the following child items:

Folder	Description
Logs	All the Print Studio Windows services logs are stored here.
PublishFolder	The publishing results files are stored here.
PublishingCache	The temporary store for the images that are used in published documents.



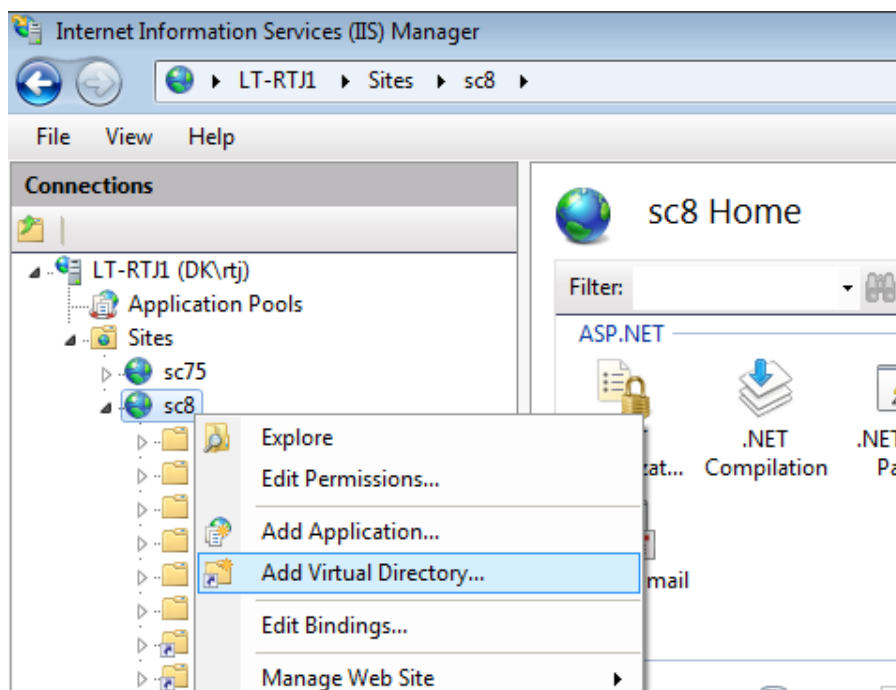
Note

The Print Studio web services logs are stored in the Sitecore website logs folder – `..\Data\logs`.

You must create `PublishFolder` as a virtual folder inside the Sitecore website.

To create a virtual directory with IIS Manager for an ASP.NET Application:

1. In **IIS Manager**, expand the local computer and the *Sites* folder.
2. Right-click the Sitecore website and click **Add Virtual Directory**.



3. In the Add Virtual Directory dialog box, specify the Alias and Physical path for the `PublishFolder`, and click OK.

PXM Server Installation Guide

Note

The services operating with the files have to be granted permissions to read, write, and create folders. If the services and applications work on different servers, the folders should be shared and accessible along the network.

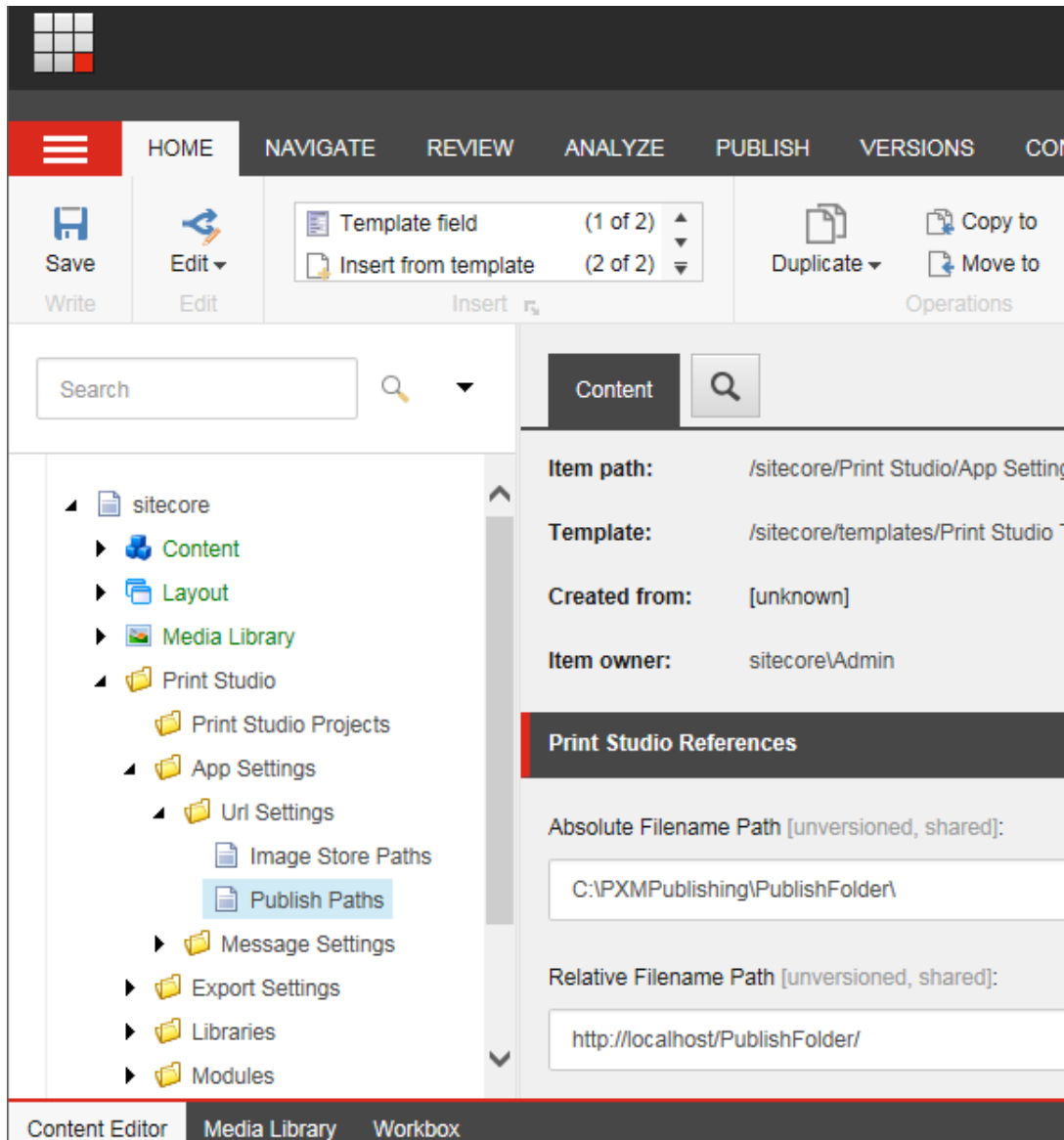
Note

Make sure the NETWORK SERVICE account has sufficient access permissions on the \PXMPublishing folder and subfolders.

4.2 Changing the Print Studio Settings in Sitecore

The Print Studio application settings are stored in the Sitecore *master* database in the `/sitecore/Print Studio/App Settings` folder.

Publish Paths are located in `/sitecore/Print Studio/App Settings/Url Settings/Publish Paths`.



The value in the **Absolute Filename Path** field must match the location of the *PublishFolder* in the parent *PXMPublishing* folder.

The value in the **Relative Filename Path** field must match the virtual folder created in the website structure in IIS Manager.

When published, the files contain download links (sent in e-mail message) that authorized users can download.

4.3 Configuring Print Studio Web Services

The following sections describe how to configure web services.

To configure the web services:

1. Open the Sitecore `web.config` file that is stored in the Sitecore website folder.
2. Navigate to the `</runtime>` section.

Note

Be careful with including the `system.serviceModel`. There might be an instance in config already. If so, either merge the two instances or delete one.

3. Paste the following configuration section:

```
<system.serviceModel>
  <serviceHostingEnvironment aspNetCompatibilityEnabled="true" />
  <bindings>
    <basicHttpBinding>
      <binding name="BasicHttpBinding_IDashboardWebService"
        hostNameComparisonMode="StrongWildcard"
        receiveTimeout="00:30:00" sendTimeout="00:30:00" openTimeout="00:30:00"
        closeTimeout="00:30:00"
        maxReceivedMessageSize="2147483647" maxBufferSize="2147483647"
        maxBufferPoolSize="2147483647"
        transferMode="Buffered" messageEncoding="Text" textEncoding="utf-8"
        bypassProxyOnLocal="false" useDefaultWebProxy="true">
        <readerQuotas maxNameTableCharCount="2147483647" maxArrayLength="2147483647"
        maxDepth="2147483647" maxStringContentLength="2147483647" />
        <security mode="None" />
      </binding>
    </basicHttpBinding>
  </bindings>
  <client>
    <endpoint address="http://localhost:8070/DashBoardWebService"
      binding="basicHttpBinding"
      bindingConfiguration="BasicHttpBinding_IDashboardWebService"
      contract="Sitecore.PrintStudio.DashBoardClient.IDashboardWebService"
      name="BasicHttpBinding_IDashboardWebService" />
  </client>
</system.serviceModel>
```

4. Edit the following key to ensure that it points to the actual `DashBoardWebService` address:
`<endpoint address=http://localhost:8070/DashBoardWebService`
5. Save the `web.config` file.

4.4 Print Studio Configurations Settings

This section describes how to configure the `PrintStudio.config` file for InDesign Server. This config file is stored in the `\Website\App_Config\Include` folder.

The configuration settings are separated into sections for each service. The configuration settings are declared by the `Sitecore.PrintStudio.Configuration.dll`, which must be located inside the `bin` folder of the Sitecore root.

Common Section

```
<!-- Common -->
<common type="Sitecore.PrintStudio.Configuration.SettingsSection,
Sitecore.PrintStudio.Configuration">
  <settings hint="raw:AddToSettingsList">
    <setting name="PrintStudio.Database" value="master"/>
    <setting name="PrintStudio.Domain" value="sitecore"/>
    <setting name="PrintStudio.AppSettings" value="/sitecore/Print Studio"/>
  </settings>
</common>
```

The configuration settings in the Common section:

Key	Description
PrintStudio.Database	The Sitecore database to use.
PrintStudio.Domain	The Sitecore domain where the user accounts should be read from.
PrintStudio.AppSettings	The Sitecore path to the Print Studio application settings in the master database.

Printstudioengine Section

```
<printstudioengine type="Sitecore.PrintStudio.Configuration.SettingsSection,
Sitecore.PrintStudio.Configuration">
  <settings hint="raw:AddToSettingsList">
    <setting name="PrintStudio.ProjectsFolder"
value="C:\inetpub\sitecore_folder\Website\projects\" />
    <setting name="PrintStudio.InDesignServerName"
value="InDesignServer.Application.CC" />
    <setting name="PrintStudio.StoreMastersInDB" value="true" />
    <setting name="PrintStudio.PublishingCachePath"
value="C:\PXMPublishing\PublishingCache\" />
    <setting name="PrintStudio.PrintDashboardQueueName" value="InDesignServer"/>
    <setting name="PrintStudio.DBServer.IPAddress" value="localhost" />
    <setting name="PrintStudio.DBServer.Port" value="8081" />
  </settings>
</printstudioengine>
```

Note

Make sure that the value in the `PrintStudio.PublishingCachePath` setting points to a shared folder on the computer where the InDesign Server is installed.

In the configuration example the CC InDesign Server is used. The `InDesignServerName` value for the InDesign Server is `InDesignServer.Application.CC`. When you use the CC 2014 version, change the `PrintStudio.InDesignServerName` setting to: `InDesignServer.Application.CC.2014`.

The configuration settings in the `printstudioengine` section:

Key	Description
PrintStudio.ProjectsFolder	The path to the <code>Projects</code> folder.
PrintStudio.InDesignServerName	The name of the InDesign Server.
PrintStudio.StoreMastersInDB	If <code>true</code> the masters are stored in the database.

PXM Server Installation Guide

Key	Description
PrintStudio.PublishingCachePath	The path to the Publishing Cache folder.
PrintStudio.PrintDashboardQueueName	The SOAP message service type that is sent to the dashboard.
PrintStudio.DBServer.IPAddress	The InDesign service address.
PrintStudio.DBServer.Port	The InDesign service port.

Note

Make sure that the `PrintStudio.DBServer.IPAddress` points to the address of the computer that is running InDesign Server.

4.5 The Pipelines Section

By default, the configuration settings for the pipelines section are available in the `PrintStudio.config` file. You only need to make changes in customized setups.

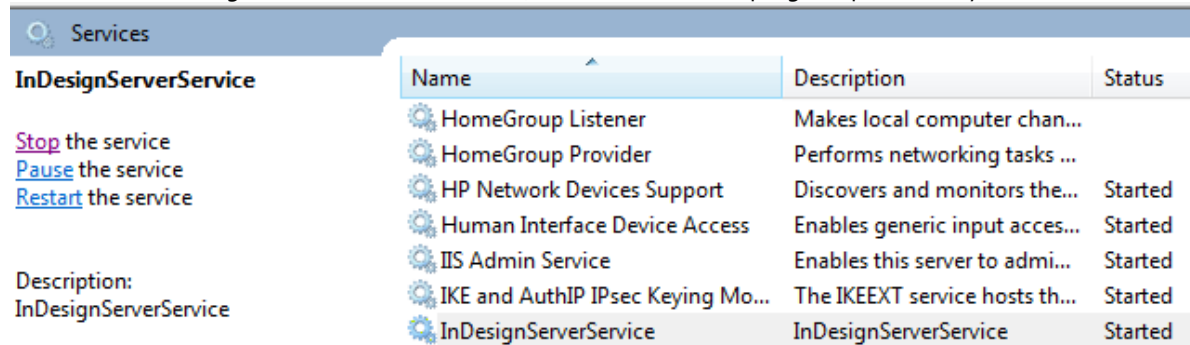
```
<pipelines>
  <printToDashboard>
    <processor type="Sitecore.PrintStudio.PublishingEngine.Pipelines.SetProcessingJob,
      Sitecore.PrintStudio.PublishingEngine" />
    <processor type="Sitecore.PrintStudio.PublishingEngine.Pipelines.RenderProjectXml,
      Sitecore.PrintStudio.PublishingEngine" />
    <processor
      type="Sitecore.PrintStudio.PublishingEngine.Pipelines.Dashboard.SendToDashboard,
      Sitecore.PrintStudio.PublishingEngine" />
    </printToDashboard>
  <printToInDesign>
    <processor type="Sitecore.PrintStudio.PublishingEngine.Pipelines.RenderProjectXml,
      Sitecore.PrintStudio.PublishingEngine" />
    <processor
      type="Sitecore.PrintStudio.PublishingEngine.Pipelines.InDesign.SendToInDesign,
      Sitecore.PrintStudio.PublishingEngine" />
    </printToInDesign>
  <renderXml>
    <processor type="Sitecore.PrintStudio.PublishingEngine.Pipelines.RenderProjectXml,
      Sitecore.PrintStudio.PublishingEngine" />
    </renderXml>
  <printPreview>
    <processor type="Sitecore.PrintStudio.PublishingEngine.Pipelines.RenderProjectXml,
      Sitecore.PrintStudio.PublishingEngine" />
    <processor
      type="Sitecore.PrintStudio.PublishingEngine.Pipelines.InDesign.GeneratePreview,
      Sitecore.PrintStudio.PublishingEngine" />
    </printPreview>
  <convertHtmlToXml>
    <processor
      type="Sitecore.PrintStudio.PublishingEngine.Pipelines.ConvertHtmlToXml.PrepareHtml,
      Sitecore.PrintStudio.PublishingEngine" />
    <processor
      type="Sitecore.PrintStudio.PublishingEngine.Pipelines.ConvertHtmlToXml.ConvertToXml,
      Sitecore.PrintStudio.PublishingEngine" />
    <processor
      type="Sitecore.PrintStudio.PublishingEngine.Pipelines.ConvertHtmlToXml.FinalizeXml,
      Sitecore.PrintStudio.PublishingEngine" />
    </convertHtmlToXml>
  <convertXmlToHtml>
    <processor
      type="Sitecore.PrintStudio.PublishingEngine.Pipelines.ConvertXmlToHtml.ConvertToHtml,
      Sitecore.PrintStudio.PublishingEngine" />
    </convertXmlToHtml>
</pipelines>
```

The configuration settings in the pipelines section

Key	Description
printToDashboard	Used for publishing with the Dashboard server. This is usually invoked with a publishing processing job from the Silverlight application. The result is sent in an e-mail message.
printToInDesign	Used for publishing directly to the InDesign Server. Can be invoked from a layout on the website. The result is placed in the appropriate path and the user should fetch it with the resulting URL.
renderXml	Invokes XML rendering and only generates the XML. This is invoked from the InDesign Connector plug-in webservice.
printPreview	Creates a preview.
convertXmltoHtml	Converts XML to HTML.
convertHtmlToXml	Converts HTML to XML.

4.6 Installing the InDesign Server Engine and Windows Services

To install the InDesign Server Windows Service, use the installation program provided by Adobe.



4.6.1 Snap-in

The InDesign Server Windows Service uses the InDesign Server Service Management Console snap-in to select the correct port for sending Soap messages.

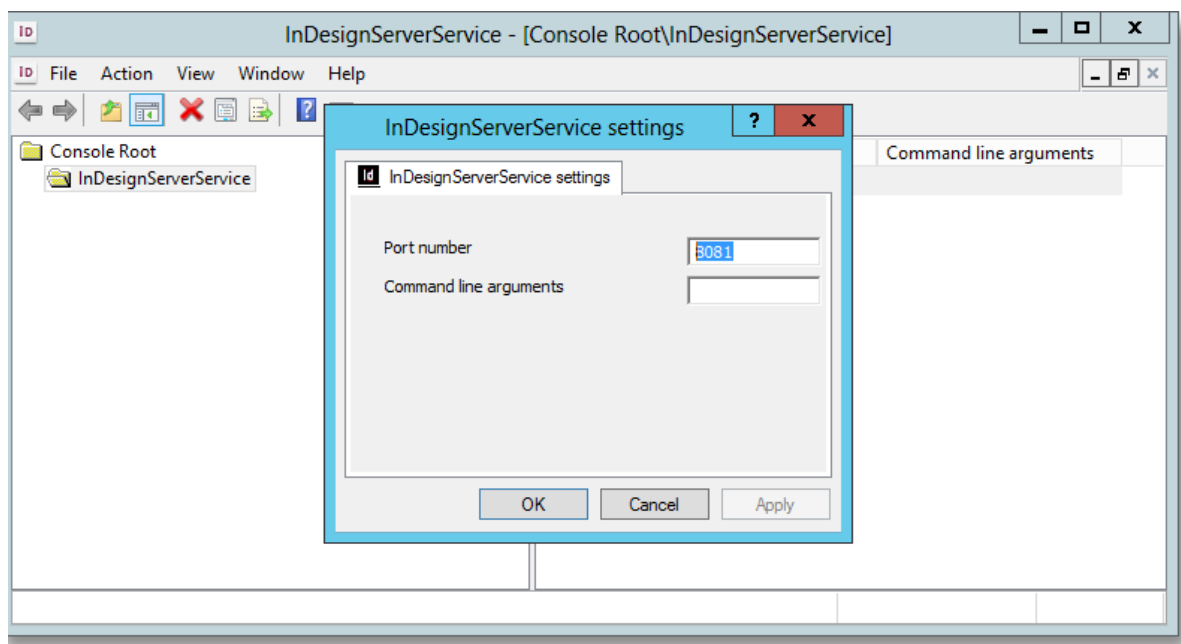
To setup the snap-in:

1. Select the Management Console. For example:
`C:\Program Files\Adobe\Adobe InDesign CC Server
x64\InDesignServerService.msc`
2. Double-click the Management Console file.
3. Right-click the `InDesignServerService` folder, click **New**, and then click **New InDesignServer Instance**.

Note

If the necessary snap-in is not available for the 64-bit service, it must be installed with the DOS-shell command line. For more information, see the section *Snap-in Unavailable for 64-bit Service*.

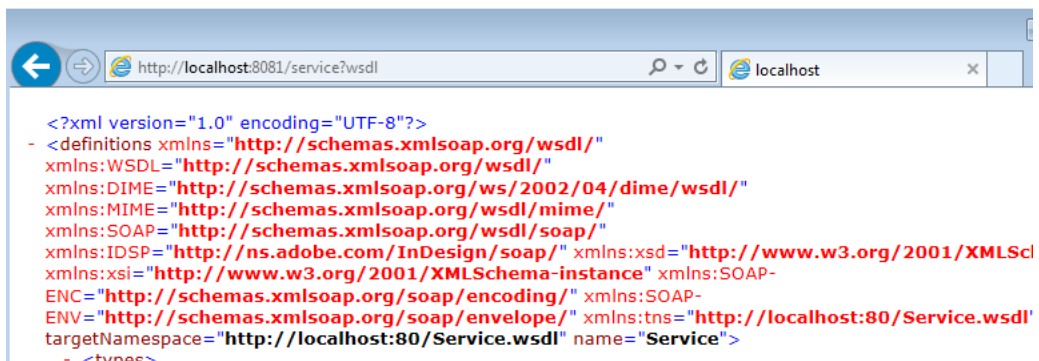
1. Right-click **InDesignServer Service** and select **Properties**.
2. Insert the port number. The default value is 8081 for InDesign Server and then click **OK**.



3. Restart the InDesign Server Service and wait a few seconds.
4. In the browser with the address and port number – for example, <http://localhost:8081/service?wsdl> – ensure that the InDesign Server is running correctly.

PXM Server Installation Guide

If the following message appears, the service is running and can be used for publishing.

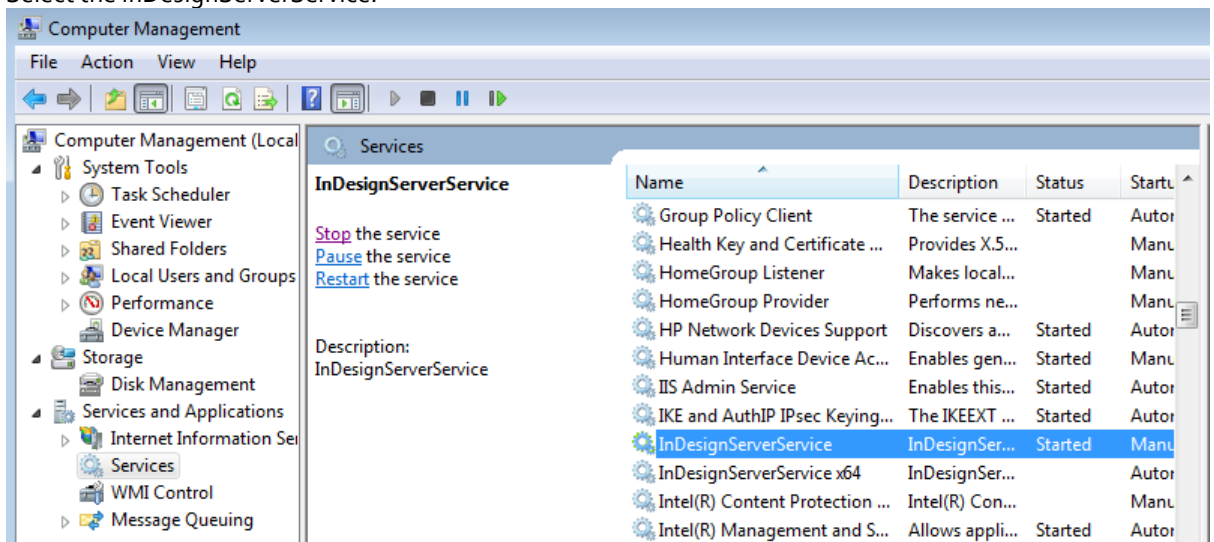


```
<?xml version="1.0" encoding="UTF-8"?>
- <definitions xmlns="http://schemas.xmlsoap.org/wsdl/"
xmlns:WSDL="http://schemas.xmlsoap.org/wsdl/"
xmlns:DIME="http://schemas.xmlsoap.org/ws/2002/04/dime/wsdl/"
xmlns:MIME="http://schemas.xmlsoap.org/wsdl/mime/"
xmlns:SOAP="http://schemas.xmlsoap.org/wsdl/soap/"
xmlns:IDSP="http://ns.adobe.com/InDesign/soap/" xmlns:xsd="http://www.w3.org/2001/XMLSchema"
xmlns:xsi="http://www.w3.org/2001/XMLSchema-instance" xmlns:SOAP-
ENC="http://schemas.xmlsoap.org/soap/encoding/" xmlns:SOAP-
ENV="http://schemas.xmlsoap.org/soap/envelope/" xmlns:tns="http://localhost:80/Service.wsdl"
targetNamespace="http://localhost:80/Service.wsdl" name="Service">
- </tns:Service>
```

Depending on your network settings, you may need to login with a different account.

To change the log in account:

1. Open the Computer Management Console.
2. Select the InDesignServerService.



3. Select the *Local System* account or edit the account that is used to run the service.

4.6.2 InDesign Server Engine

The InDesign Server Engine CC – or CC 2014 – is used for publishing documents with InDesign Server CC – or CC 2014. It is not a Windows service, but an InDesign Server plug-in.

You can download IDSEngineSetup_x64 CC 8.0 rev. xxxxxx.msi from <https://dev.sitecore.net>.

The installation folder for the plug-in is located at:

C:\Program Files\Adobe\Adobe InDesign CC Server x64\Plug-Ins\Sitecore
or

C:\Program Files\Adobe\Adobe InDesign CC Server 2014\Plug-Ins\Sitecore

To install InDesign Server Engine CC:

1. Start the IDSEngineSetup_x64 CC 8.0 rev. xxxxxx.msi.
2. In the opening window, click **Next**.
3. If you have a previous version installed, you will receive a pop-up message. To continue the installation, click **Yes**.

4. Read the License Agreement, select **I accept the terms in the License Agreement** and then click **Next**.
5. Select the destination folder and click **Next**.
6. Click **Install** to start the installation.
7. If you are upgrading, your system may request a restart. Click **OK**.
8. When the installation is completed, click **Finish**.
9. Start or restart the InDesignServerService.

4.6.3 Installing the Dashboard Service

The Dashboard Service handles jobs in the MS Queues. You can download the PrintStudioDashboardServerSetup_x86 8.0 rev. xxxxxx.msi installation program from <https://dev.sitecore.net>.

To install the dashboard service:

1. Start the PrintStudioDashboardServerSetup_x86 8.0 rev. xxxxxx.msi installation program.
2. If you have a previous version installed, you will receive a pop-up message. To continue the installation, click **Yes**.
3. Read the license agreement, select **I accept the terms in the License Agreement** and then click **Next**.
4. Select the destination folder and click **Next**.
5. Click **Install** to start the installation.
6. When installation is completed, click **Finish**.

Configuring the Dashboard Service

The DashboardServer.exe.config file contains the configuration settings. This configuration file is stored in the installation folder of the service – C:\Program files (x86)\Sitecore\Print Studio Dashboard Server.

To configure the dashboard service:

1. Open DashboardServer.exe.config file and add the appropriate value to the LogFolder setting.

```
<configSections>
  <section name="Sitecore.PrintStudio.LoggerSettings"
type="Sitecore.PrintStudio.Logger.Settings.LoggerSettings, Sitecore.PrintStudio.Logger" />
</configSections>
<Sitecore.PrintStudio.LoggerSettings>
  <LogFile>
    <add key="LogFolder" value="C:\PXMPublishing\Logs\DashBoardServer\" />
    <add key="LogFileName" value="DashBoardServerLog" />
    <add key="LogMaxSizeInBytes" value="500000" />
    <add key="CountersResetOnStartup" value="true" />
    <add key="CountersEnabled" value="false" />
  </LogFile>
</Sitecore.PrintStudio.LoggerSettings>
<appSettings>
  <add key="PrintStudio.DBServer.QueuesPath" value=".\\Private$\PrintStudio " />
  <add key="PrintStudio.DBServer.SMTPClient" value="localhost" />
  <add key="PrintStudio.DBServer.FromEmailAddress" val-
ue="publishing@printstudio.com" />
  <add key="PrintStudio.DBServer.LogFolder" val-
ue="C:\PXMPublishing\Logs\DashBoardServer\Jobs\" />
</appSettings>
```

2. Edit the AppSettings section.

PXM Server Installation Guide

The configuration settings for Print Studio Dashboard Server:

Key	Description
PrintStudio.DBServer.QueuesPath	The path to the MS Queue that is used for jobs.
PrintStudio.DBServer.SMTPClient	The SMTP server address that is used to handle email notifications.
PrintStudio.DBServer.FromEmailAddress	The sender email address that is used in notifications.
PrintStudio.DBServer.LogFolder	The location of the log files for each particular processing job.

3. In the Service Model section, enter the appropriate value for the DashBoardWebService reference.

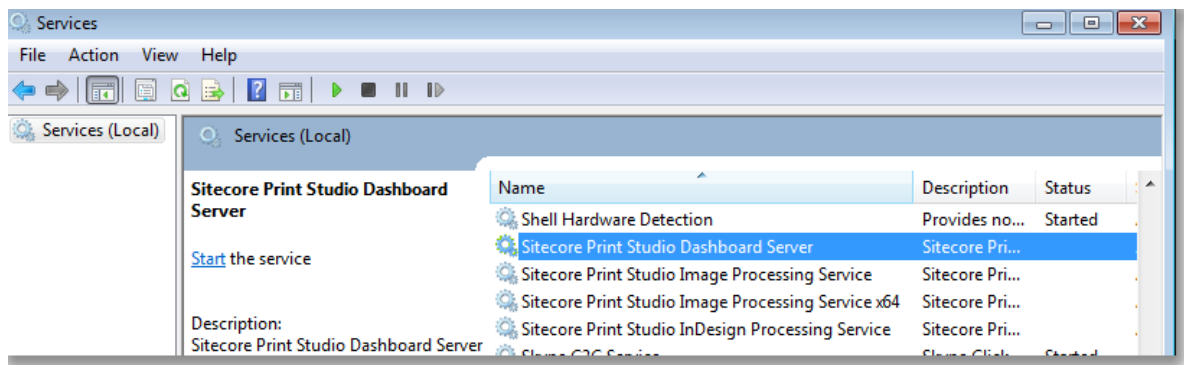
```
<system.serviceModel>
  <serviceHostingEnvironment aspNetCompatibilityEnabled="true" />
  <services>
    <service behaviorConfiguration="DashBoardWebServiceBehavior"
name="Sitecore.PrintStudio.DashBoardServer.DashBoardWebService">
      <endpoint address="" binding="basicHttpBinding" bindingConfigura-
tion="BasicHttpBinding_IDashBoardWebService" con-
tract="Sitecore.PrintStudio.DashBoardClient.IDashBoardWebService"/>
      <endpoint address="mex" binding="mexHttpBinding" con-tract="IMetadataExchange"
/>
    </service>
    <host>
      <baseAddresses>
        <add baseAddress="http://localhost:8070/DashBoardWebService"/>
      </baseAddresses>
    </host>
  </services>
  <behaviors>
    <serviceBehaviors>
      <behavior name="DashBoardWebServiceBehavior">
        <serviceMetadata policyVersion="Policy15" httpGetEnabled="true" />
        <serviceDebug includeExceptionDetailInFaults="false" />
      </behavior>
    </serviceBehaviors>
  </behaviors>
  <bindings>
    <basicHttpBinding>
      <binding name="BasicHttpBinding_IDashBoardWebService" hostNameCompari-
sonMode="StrongWildcard"
receiveTimeout="00:30:00" sendTimeout="00:30:00" openTimeout="00:30:00"
closeTimeout="00:30:00"
maxReceivedMessageSize="2147483647" maxBufferSize="2147483647" max-
BufferPoolSize="2147483647"
transferMode="Buffered" messageEncoding="Text" textEncoding="utf-8"
bypassProxyOnLocal="false" useDefaultWebProxy="true">
        <readerQuotas maxNameTableCharCount="2147483647" maxArray-
Length="2147483647" maxDepth="2147483647" maxStringContentLength="2147483647" />
        <security mode="None" />
      </binding>
    </basicHttpBinding>
  </bindings>
</system.serviceModel>
```

4. Save the changes to the configuration file.

Note

The service must be started or restarted if it is already running.

5. Open the Services management console and start the *Sitecore Print Studio Dashboard Server* service.



4.6.4 Installing the InDesign Processing Service

The InDesign Processing Service handles publishing from the Print Studio Editor to the InDesign Server.

Download the `PrintStudioInDesignServiceSetup_x86 8.0 rev. xxxxxx.msi` installation program from <https://dev.sitecore.net>.

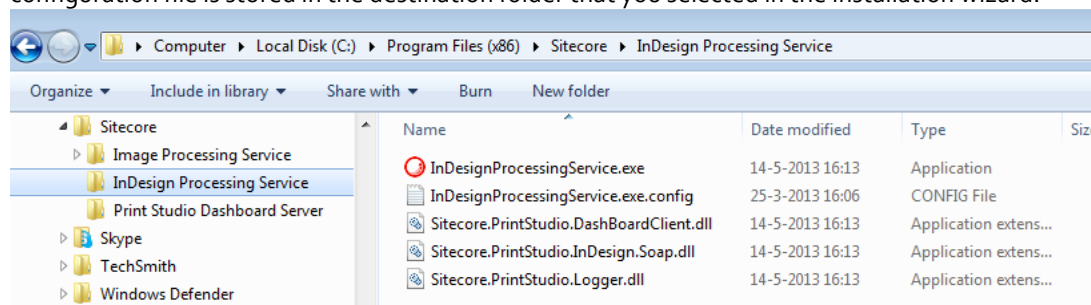
The `InDesignProcessingService.exe.config` contains the configuration settings. This configuration file is stored in the installation folder of the service – `C:\Program files (x86)\Sitecore\InDesign Processing Service`.

To install the InDesign Processing Service:

1. Start the `PrintStudioInDesignServiceSetup_x86 8.0 rev. xxxxxx.msi` installation program.
2. Click **Next**.
3. If you have a previous version installed, you will receive a pop-up message. To continue the installation, click **Yes**.
4. Read the license agreement, select **I accept the terms in the License Agreement** and then click **Next**.
5. Select the destination folder and click **Next**.
6. Click **Install** to start the installation.
7. When installation is completed, click **Finish**.

Configuring the InDesign Processing Service

The `InDesignProcessingService.exe.config` contains the configuration settings. This configuration file is stored in the destination folder that you selected in the installation wizard.



To configure the InDesign Processing Service:

1. Open `InDesignProcessingService.exe.config` files and edit the appropriate values.

```
<Sitecore.PrintStudio.LoggerSettings>
  <LogFile>
```

PXM Server Installation Guide

```
<add key="LogFolder" value="C:\PXMPublishing\Logs\InDesignProcessingService\" />
<add key="LogFileName" value="InDesignProcessingServiceLog" />
<add key="LogMaxSizeInBytes" value="500000" />
  <add key="CountersResetOnStartup" value="true" />
  <add key="CountersEnabled" value="false" />
</LogFile>
</Sitecore.PrintStudio.LoggerSettings>
<appSettings>
  <add key="PrintStudio.DBServer.SMTPClient" value="localhost" />
  <add key="PrintStudio.DBServer.QueueName" value="InDesignServer" />
  <add key="PrintStudio.DBServer.ServiceVersion" value="CC" />
  <add key="PrintStudio.DBServer.FromEmailAddress" value="publishing@sitecore.net" />
  <add key="PrintStudio.DBServer.ToEmailAddress" value="" />
  <add key="PrintStudio.DBServer.EmailNotification" value="off" />
</appSettings>
```

Note

In this code example, the value for the InDesign Server – `PrintStudio.DBServer.ServiceVersion` is CC.

If you are using InDesign Server CC 2014, change this value to:

```
<add key="PrintStudio.DBServer.ServiceVersion" value="CC.2014" />
```

The configuration settings for InDesign Processing Service:

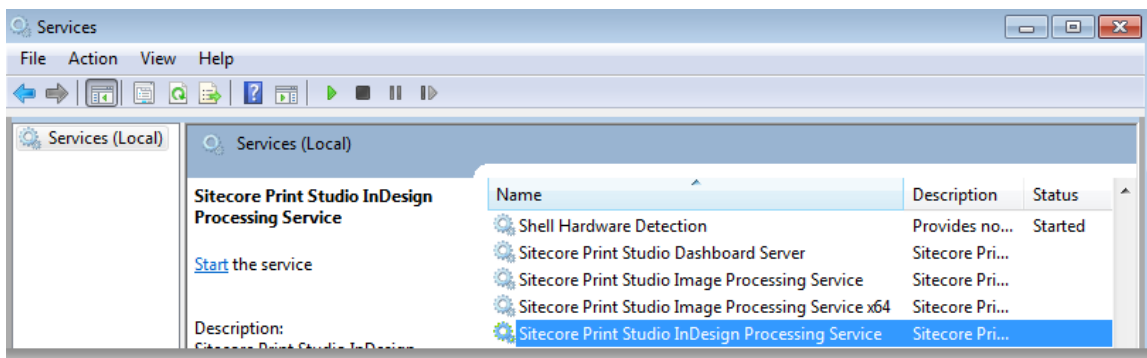
Key	Description
LogFolder	The folder that the log files are written to.
PrintStudio.DBServer.SMTPClient	The SMTP Client version.
PrintStudio.DBServer.QueueName	The service type for publishing.
PrintStudio.DBServer.ServiceVersion	The InDesign Server version (CC or CC.2014).
PrintStudio.DBServer.FromEmailAddress	The email of the sender in notifications.
PrintStudio.DBServer.ToEmailAddress	The email of the receiver in notifications.
PrintStudio.DBServer.EmailNotification	Send email notifications – Y/N.

2. Enter the appropriate values for the DashboardWebService.

```
<system.serviceModel>
  <bindings>
    <basicHttpBinding>
      <binding name="BasicHttpBinding_IDashboardWebService" hostNameComparisonMode="StrongWildcard"
        receiveTimeout="00:30:00" sendTimeout="00:30:00" openTimeout="00:30:00"
        closeTimeout="00:30:00"
        maxReceivedMessageSize="2147483647" maxBufferSize="2147483647"
        maxBufferPoolSize="2147483647"
        transferMode="Buffered" messageEncoding="Text" textEncoding="utf-8"
        bypassProxyOnLocal="false" useDefaultWebProxy="true">
        <readerQuotas maxNameTableCharCount="2147483647" maxArrayLength="2147483647"
        maxDepth="2147483647" maxStringContentLength="2147483647" />
        <security mode="None" />
      </binding>
    </basicHttpBinding>
  </bindings>
  <client>
    <endpoint address="http://localhost:8070/DashboardWebService"
      binding="basicHttpBinding" bindingConfiguration="BasicHttpBinding_IDashboardWebService"
      contract="Sitecore.PrintStudio.DashboardClient.IDashboardWebService"
      name="BasicHttpBinding_IDashboardWebService" />
  </client>
</system.serviceModel>
```

3. Save and close the configuration file.

4. Open the **Services** management console.
5. Right-click *Sitecore InDesign Processing Service* and click **Start**.



4.6.5 PDF Settings

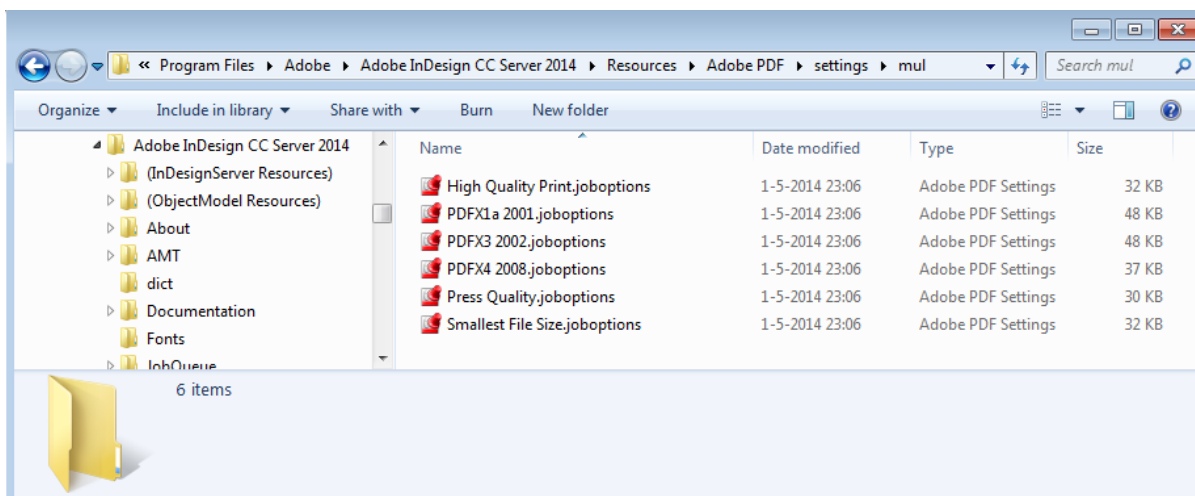
The Publishing Settings items – `/sitecore/Print Studio/Publishing Settings` – refer to the PDF settings files – `.joboptions` – that are available on the publishing server – the server that runs InDesign Server.

The required PDF Settings can be created with Adobe InDesign.

The `joboptions` file must be available on the server that runs InDesign Server.

Note

You must restart the `InDesignServerService` when you add new `.joboptions`.



Chapter 5

Troubleshooting

This chapters describes common installation issues.

This chapter contains the following sections:

- Typical Troubleshooting Scenarios

5.1 Typical Troubleshooting Scenarios

5.1.1 Publishing Error

The pipelines are invoked in the publishing process. The pipelines section is outside the `printstudio` node and its content should be placed in the pipelines node in the `PrintStudio.config` file. If the pipelines section is placed in another section, it causes a publishing error.

For more information about pipelines, see the section *Pipelines*.

5.1.2 Snap-in Unavailable for 64-bit Service

When the necessary snap-in is not available, it must be installed from the dos-shell command line.

```
C:\Program Files\Adobe\Adobe InDesign CC Server x64
```

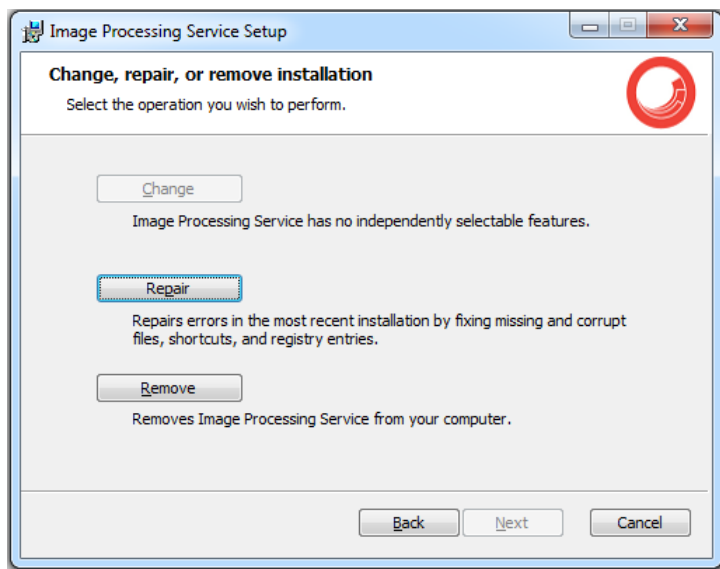
1. Select the folder where you want to install the snap-in.
2. Enter the `regsvr32 InDesignServerMMC64.dll` command.
3. Click **OK**.

5.1.3 Window Services Fails after Upgrade

When you upgrade the windows services, sometimes the upgrade is not completely successful. The service can fail when you try to start it.

To fix this error, repair the installation:

Run the installation program to repair the program or in the installed programs list, right-click the program and then click **Repair**.



5.1.4 Rich Text Field not Visible

If the rich text field from the content item is not visible when publishing:

1. Check if the default transformation set is configured correctly:

```
/sitecore/Print Studio/Modules/InDesign  
connector/Transformations/Default TransformationSet
```


2. Check if the default transformation set is selected in:

```
/sitecore/Print Studio/Modules/InDesign connector/Other  
Settings/Default settings/Default set-tings
```

5.1.5 Unable to Save Master Documents

If you have difficulties saving master documents with, for example, embedded images in InDesign master files, you may need to adjust the `maxRequestLength` and `executionTimeout` settings in the `web.config` file.

To configure these settings:

1. Open the `web.config` file. It is stored in the Sitecore website folder.
2. Navigate to the `</system.web>` section.
3. Edit the following setting:

```
<httpRuntime maxRequestLength="2097151" executionTimeout="10200" />
```

4. Save the `web.config` file.

5.1.6 Media Files Unavailable

In Sitecore 7.5 installations, IDC users may have problems viewing the media items that belong to their websites.

To solve this problem:

1. Add the following `<sites>` section to the `PrintStudio.config` file before `</sitecore>`:

```
<sites>  
  <site x:before="*[@name='website']" name="printstudio"  
virtualFolder="/printstudio/services" physicalFolder="/printstudio/services/"  
rootPath="/sitecore/content" language="en" database="master" domain="sitecore"  
enableWorkflow="true" enableAnalytics="false" />  
</sites>  
<mediaLibrary>  
  <requestProtection>  
    <ignoreSites>  
      <site name="printstudio"/>  
    </ignoreSites>  
  </requestProtection>  
</mediaLibrary>
```

2. IDC users must clear the cache to implement the config file changes.